

Free Monthly Bulk Pickup

City of Toledo residents are eligible for one free bulk pickup per month. This needs to be scheduled 48 hours in advance by calling **419.936.2511**. Items will be collected one business day following your regular trash collection (example: trash collection is Wednesday, so bulk pickup is Thursday). Bulk items must be placed at the curb in front of your home.

- Wood/branches must be bundled and tied no larger than 3' x 4' and no heavier than 40 lbs.
- Nails/screws must be pounded down or removed
- Loose items of five or more (lumber, brush, etc.) should be tied in bundles not exceeding 6' x 2' in diameter and weigh no more than 40 lbs.
- No loose clothing items will be accepted; clothing items need to be bagged
- Rolled rugs and/or carpet must be tied in lengths of 6' or less and weigh no more than 40 lbs.

Residents must schedule bulk collection with Republic Services by calling **419.936.2511** at least 48 hours prior to placing the items curbside. Residents and homeowners may be charged a fine by not adhering to the proper rules.

Unacceptable Bulk Items

- Batteries
- Tires
- Hazardous waste (oil, paint, chemicals)
- Building or construction materials (from commercial work)
- Major car parts
- White-ware items (stoves, refrigerators, hot water tanks, washers and dryers)
- Metal box springs
- Metal doors
- Computer monitors

Trash Assistance Program (TAP)

Toledo residents who need help getting their recycling and trash carts to the curb should call Republic Services at **419.936.2511** to request an application. The Toledo ADA Assistance Program is a collaborative effort of Republic Services, Lucas County, the City of Toledo and the Toledo/Lucas County Commission on Disabilities.

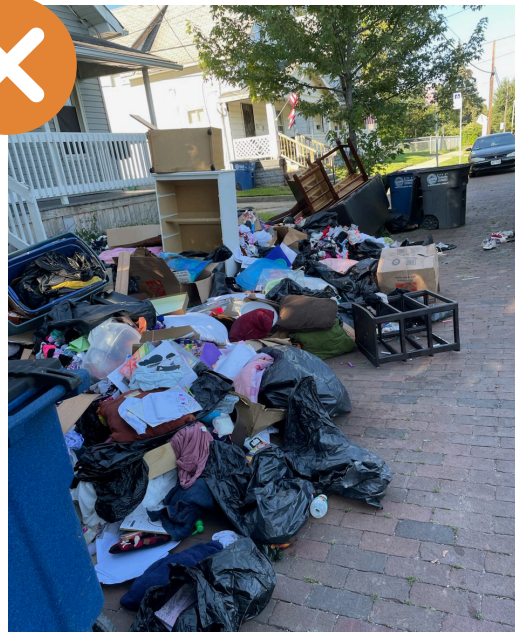
Co.lucas.oh.us/749/solid-waste-management

©2023 Republic Services, Inc.

Example of Proper Bulk Item Placement



Example of Improper Bulk Item Placement



Toledo, OH

Recycling & Trash Service Guide



Sustainability in Action

Check Out Our Expanded Recycling Program

What is staying the same?

Our dedicated crew will pick up your recyclables on an every-other-week basis. Recyclables will be collected mixed in your recycling cart. Recyclables should be placed loose, not bagged, in your recycling cart.

What is changing?

Recyclables will be delivered to Republic Services for processing. The list of acceptable materials has expanded. See below.



GLASS

Bottles and jars only (all colors).
No mirrors, ceramics or window glass.



CARTONS

Juice, milk and ice cream cartons.



METAL CANS

Aluminum and steel cans. Rinse clean.
No scrap metal.



PLASTICS

#1, #2, #4, #5 and #7 plastic bottles and jars (caps on) and plastic containers with lids on.
No bulky plastic or film plastic.



PAPER

Newspaper, office paper, junk mail, paperback books and magazines (clean and dry).
Do not bundle or bag.



CARDBOARD

Corrugated cardboard, paperboard boxes (cereal, pasta, etc.) and frozen food boxes. Flatten to save space.

NEVER PUT THESE ITEMS IN YOUR RECYCLING CART



Plastic Bags



Yard Waste



Food Waste

2024 Collection Calendar

Trash Route



Recycling Route

Bulk Route (one free pre-scheduled pickup per month)

JANUARY						
S	M	T	W	T	F	S
	1 NEW YEAR'S DAY	2 B2	3 R2	4 Y1	5 G1	6 O1
7	8 B1	9 R1	10 Y2	11 G2	12 O2	13
14	15 B2	16 R2	17 Y1	18 G1	19 O1	20
21	22 B1	23 R1	24 Y2	25 G2	26 O2	27
28	29 B2	30 R2	31 Y1			

FEBRUARY						
S	M	T	W	T	F	S
				1 G1	2 O1	3
4	5 B1	6 R1	7 Y2	8 G2	9 O2	10
11	12 B2	13 R2	14 Y1	15 G1	16 O1	17
18	19 B1	20 R1	21 Y2	22 G2	23 O2	24
25	26 B2	27 R2	28 Y1	29 G1		

MARCH						
S	M	T	W	T	F	S
					1 O1	2
3	4 B1	5 R1	6 Y2	7 G2	8 O2	9
10	11 B2	12 R2	13 Y1	14 G1	15 O1	16
17	18 B1	19 R1	20 Y2	21 G2	22 O2	23
24	25 B2	26 R2	27 Y1	28 G1	29 O1	30
31						

APRIL						
S	M	T	W	T	F	S
	1 B1	2 R1	3 Y2	4 G2	5 O2	6
7	8 B2	9 R2	10 Y1	11 G1	12 O1	13
14	15 B1	16 R1	17 Y2	18 G2	19 O2	20
21	22 B2	23 R2	24 Y1	25 G1	26 O1	27
28	29 B1	30 R1				

MAY						
S	M	T	W	T	F	S
			1 Y2	2 G2	3 O2	4
5	6 B2	7 R2	8 Y1	9 G1	10 O1	11
12	13 B1	14 R1	15 Y2	16 G2	17 O2	18
19	20 B2	21 R2	22 Y1	23 G1	24 O1	25
26	27 MEMORIAL DAY	28 B1	29 R1	30 Y2	31 G2	

JUNE						
S	M	T	W	T	F	S
						1 O2
2	3 B2	4 R2	5 Y1	6 G1	7 O1	8
9	10 B1	11 R1	12 Y2	13 G2	14 O2	15
16	17 B2	18 R2	19 Y1	20 G1	21 O1	22
23	24 B1	25 R1	26 Y2	27 G2	28 O2	29
30						

JULY						
S	M	T	W	T	F	S
				1 FOURTH OF JULY	2 G1	3 O1
4	5 B2	6 R2	7 Y1	8 G2	9 O2	10
11	12 B1	13 R1	14 Y2	15 G1	16 O1	17
18	19 B2	20 R2	21 Y1	22 G2	23 O2	24
25	26 B1	27 R1	28 Y2	29 G1	30 O1	31

AUGUST						
S	M	T	W	T	F	S
				1 G1	2 O1	3
4	5 B1	6 R1	7 Y2	8 G2	9 O2	10
11	12 B2	13 R2	14 Y1	15 G1	16 O1	17
18	19 B1	20 R1	21 Y2	22 G2	23 O2	24
25	26 B2	27 R2	28 Y1	29 G1	30 O1	31

SEPTEMBER						
S	M	T	W	T	F	S
1	2 LABOR DAY	3 B1	4 R1	5 Y2	6 G2	7 O2
8	9 B2	10 R2	11 Y1	12 G1	13 O1	14
15	16 B1	17 R1	18 Y2	19 G2	20 O2	21
22	23 B2	24 R2	25 Y1	26 G1	27 O1	28
29	30 B1					

OCTOBER						
S	M	T	W	T	F	S
		1 R1	2 Y2	3 G2	4 O2	5
6	7 B2	8 R2	9 Y1	10 G1	11 O1	12
13	14 B1	15 R1	16 Y2	17 G2	18 O2	19
20	21 B2	22 R2	23 Y1	24 G1	25 O1	26
27	28 B1	29 R1	30 Y2	31 G2		

NOVEMBER						
S	M	T	W	T	F	S
					1 O2	2
3	4 B2	5 R2	6 Y1	7 G1	8 O1	9
10	11 B1	12 R1	13 Y2	14 G2	15 O2	16
17	18 B2	19 R2	20 Y1	21 G1	22 O1	23
24	25 B1	26 R1	27 Y2	28 G2	29 O2	30
			1 THANKSGIVING DAY			

DECEMBER						
S	M	T	W	T	F	S
1	2 B2	3 R2	4 Y1	5 G1	6 O1	7
8	9 B1	10 R1	11 Y2	12 G2	13 O2	14
15	16 B2	17 R2	18 Y1	19 G1	20 O1	21
22	23 B1	24 R1	25 Y2	26 G2	27 O2	28
29	30 B2	31 R2				

Trash Collection Guidelines

- Place carts curbside by 7 a.m.
- Trash must be bagged for collection
- Please put all trash in the trash cart
- Face the cart toward the street (wheels facing away from the street)
- Position the cart within 2 feet of the curb
- Avoid placing the cart near parked cars, mailboxes or other objects
- Carts are property of the City of Toledo and contain a serial number that coincides with your residence. Do not remove carts. If you plan to move, or if your cart is damaged, call Republic Services.

Unacceptable Waste Items

- Dirt, sod, rocks or paving stones
- Heavy construction debris like shingles, brick or concrete
- Hot ashes, coals, solvents or flammable materials
- Liquids, including paint
- Hazardous waste like oils, poisons, corrosives, batteries, etc.
- Auto parts

Medical Waste Collection Guidelines

- Hypodermic needles must be placed inside a container with the lid closed
- Check with your home care provider to see if they offer disposal, and, if not, double bag medical waste (**dry only**) before placing in the trash

[Co.lucas.oh.us/749/solid-waste-management](https://co.lucas.oh.us/749/solid-waste-management)