

LOCATION MAP
NOT TO SCALE

DESIGN DESIGNATION

CURRENT ADT (2022)	12,000
DESIGN YEAR ADT (2042)	12,600
DESIGN HOURLY VOLUME	1,250
DIRECTIONAL DISTRIBUTION	51%
TRUCKS (24 HOUR B&C)	4%
DESIGN SPEED	35 MPH
LEGAL SPEED	35 MPH
DESIGN FUNCTIONAL CLASSIFICATION	URBAN LOCAL

UNDERGROUND UTILITIES
Contact Two Working Days
Before You Dig

OHIO811.org
Before You Dig

OHIO811, 8-1-1, or 1-800-362-2764
(Non-members must be called directly)

Project Survey Control System used:
Horizontal Control: NAD 83 before HARN
Shift of 1995.
Vertical Control: NAVD 88
Survey Information in Project Folder.

**BROADWAY STREET
ROADWAY RECONSTRUCTION
STEBBINS STREET TO WESTERN AVENUE
LUCAS COUNTY, CITY OF TOLEDO, OHIO
LUC-BROADWAY STREET RECON**

INDEX OF SHEETS

TITLE SHEET	1
SCHEMATIC PLAN	2-7
GENERAL NOTES	8
GENERAL SUMMARY	9
TYPICAL SECTION	10-11
DRIVE TABLE/MISCELLANEOUS DETAILS	12
INTERSECTION DETAILS	13-24
PLAN & PROFILE	25-36
CROSS SECTIONS	XX-XX
RIGHT-OF-WAY PLANS	RW1-RW4
PAVEMENT MARKINGS	M1-M?
STORM WATER POLLUTION PROTECTION PLAN	S1-S?

LEGEND

EXISTING	PROPOSED
MHSAN SAN SANITARY SEWER	MH PIPE
MHST ST CB STORM SEWER	-R/W- RIGHT-OF-WAY
MHW W WATERLINE	#=#=#=#=# CURB REMOVED
MHE E ELECTRICAL	HYDRANT
MHT T TELEPHONE	MH CB STRUCTURES, ADJUSTED OR RECONSTRUCTED
G GAS LINES	MH CB STRUCTURES, NEW
C CABLE	SURFACE FLOW DIRECTION
FO FIBER-OPTIC	TREES REMOVED
CENTERLINE	CONCRETE DRIVE & WALK
-R/W- RIGHT-OF-WAY	PAVEMENT/WALK REMOVED
P/L PROPERTY LINE	ASPHALT REMOVED
CURB	DRIVE REMOVED
FENCE	COND. CONDUIT (SEWER PIPE)
WATER VALVE	DEFL. DEFLECTION
GAS VALVE	D.I.P. DUCTILE IRON PIPE (WATERLINE PIPE)
HYDRANT	#T RIGHT-OF-WAY TAKE, TEMPORARY
UTILITY POLE	#WD RIGHT-OF-WAY TAKE, PERMANENT
GUY WIRE	
PEDESTRIAN RAMP	
TREES (CONIF., DECID.)	
SURVEY MONUMENTS	
(UNSUR) UNSURVEYED	
EXISTING BUILDING	

PROJECT DESCRIPTION

THIS PROJECT WILL RECONSTRUCT 0.95 MILES OF PAVEMENT ON BROADWAY STREET, FROM STEBBINS STREET TO WESTERN AVENUE. THIS INCLUDES REMOVING AND REPLACING THE PAVEMENT, CURB, THE DRIVE APPROACHES, AND PEDESTRIAN RAMPS, AS WELL AS ADDING MEDIANS AND PARKING BAYS IN VARIOUS LOCATIONS. LAST, THE PROJECT WILL INCLUDE DRAINAGE IMPROVEMENTS.

NOTES

THE 2019 CONSTRUCTION MATERIAL STANDARD SPECIFICATIONS OF THE STATE OF OHIO, DEPARTMENT OF TRANSPORTATION INCLUDING CHANGES AND SUPPLEMENTAL SPECIFICATIONS LISTED IN THE PROPOSAL, SHALL GOVERN THIS IMPROVEMENT.

APPROVALS

APPROVED: _____ DATE: _____	DOUGLAS R. STEPHENS, P.E. DIRECTOR DEPARTMENT OF TRANSPORTATION
APPROVED: _____ DATE: _____	CHRISTY SONCRANT, P.E. ADMINISTRATOR DIVISION OF ENGINEERING & CONSTRUCTION MANAGEMENT
APPROVED: _____ DATE: _____	TIMOTHY D. GROSJEAN, P.E. SENIOR TRANSPORTATION ENGINEER DIVISION OF ENGINEERING & CONSTRUCTION MANAGEMENT
APPROVED: _____ DATE: _____	JOEL MCGORTY DESIGN ENGINEER DIVISION OF ENGINEERING & CONSTRUCTION MANAGEMENT

Design Constructed: Yes <input type="checkbox"/> No <input type="checkbox"/>	Book _____ Page _____
Construction Completion Date: _____	Record Drawing Date: _____

FEDERAL PROJ. NO. NA

PID NO. 111306

RR INVOLVEMENT NONE

TITLE SHEET

**BROADWAY STREET
ROADWAY RECONSTRUCTION
STEBBINS ST. TO WESTERN AVE.**

DESIGN AGENCY
Department of Transportation
TOL
City of Toledo
Division of Engineering & Construction Mgmt.

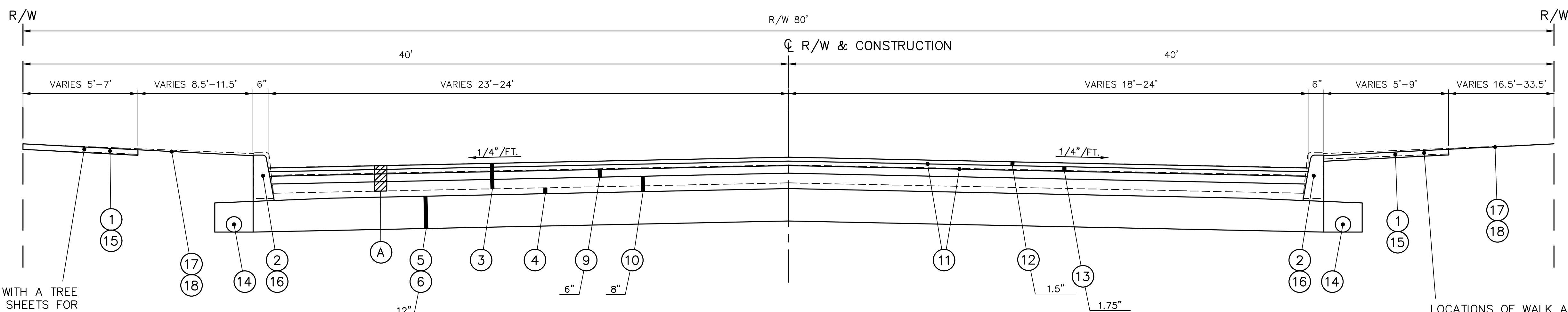
DESIGNER -

REVIEWER -

PROJECT ID 21123

SHEET 1 TOTAL XX

X:\21000-21999\21123\DWG\21123-TITLE.dwg, 1, 11/3/2022 3:25:24 PM, schultze

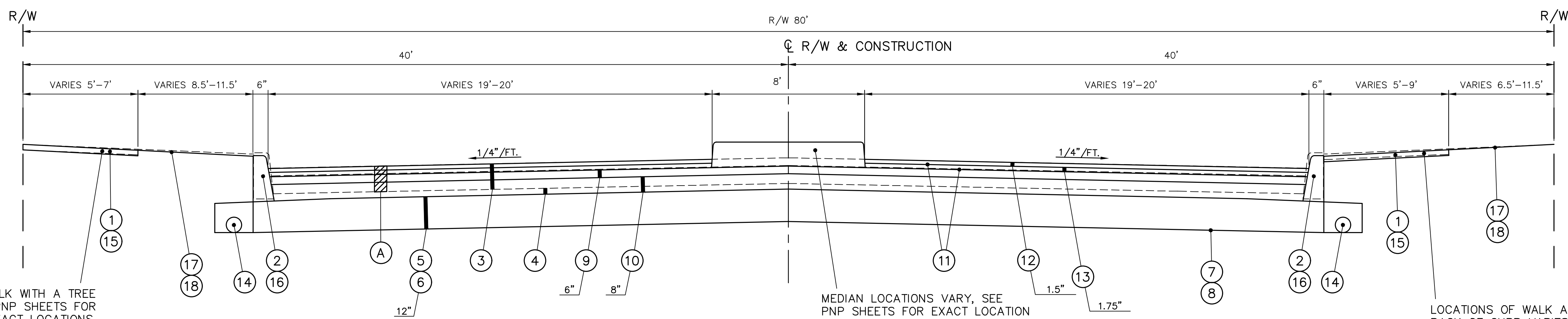


LOCATIONS OF WALK WITH A TREE LAWN VARY SEE PNP SHEETS FOR EXACT LOCATIONS.

LOCATIONS OF WALK ADJACENT TO BACK OF CURB VARIES, SEE PNP SHEETS FOR EXACT LOCATIONS.

TYPICAL SECTION A - BROADWAY STREET WITHOUT MEDIAN
(NOT TO SCALE)

- | | |
|--------------------------------|--------------------------------|
| STA. 17+49.79 to STA. 38+46.00 | STA. 54+54.00 to STA. 57+71.00 |
| STA. 40+54.00 to STA. 42+71.00 | STA. 59+14.00 to STA. 62+46.00 |
| STA. 44+19.00 to STA. 50+06.00 | STA. 64+54.00 to STA. 67+68.82 |
| STA. 51+44.00 to STA. 52+46.00 | |



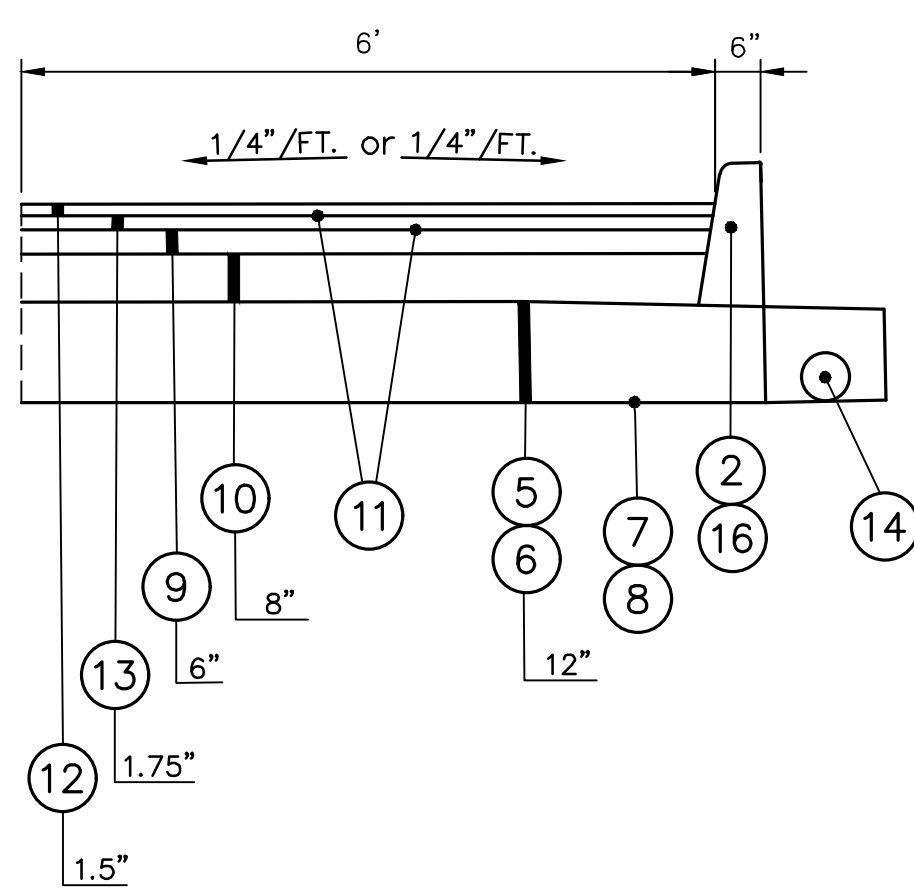
LOCATIONS OF WALK WITH A TREE LAWN VARY SEE PNP SHEETS FOR EXACT LOCATIONS.

MEDIAN LOCATIONS VARY, SEE PNP SHEETS FOR EXACT LOCATION

LOCATIONS OF WALK ADJACENT TO BACK OF CURB VARIES, SEE PNP SHEETS FOR EXACT LOCATIONS.

TYPICAL SECTION B - BROADWAY STREET WITH MEDIAN
(NOT TO SCALE)

- | | |
|--------------------------------|--------------------------------|
| STA. 38+46.00 to STA. 40+54.00 | STA. 52+46.00 to STA. 54+54.00 |
| STA. 42+71.00 to STA. 44+19.00 | STA. 57+71.00 to STA. 59+14.00 |
| STA. 50+06.00 to STA. 51+44.00 | STA. 62+46.00 to STA. 64+54.00 |



BROADWAY STREET PARKING BAY DETAIL
(NOT TO SCALE)

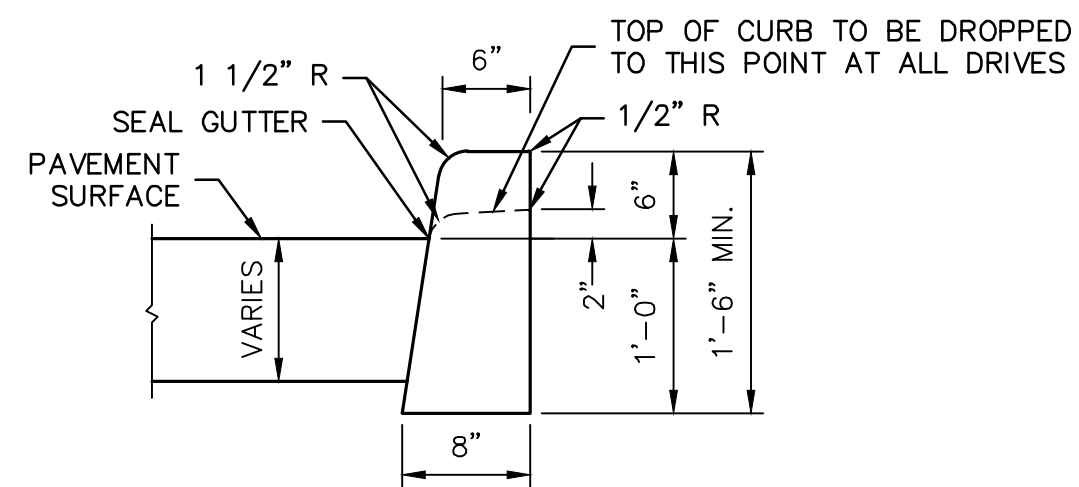
LOCATIONS AND SLOPES OF THE PARKING BAYS CAN BE FOUND ON THE PNP SHEETS.

PROPOSED PAVEMENT LEGEND

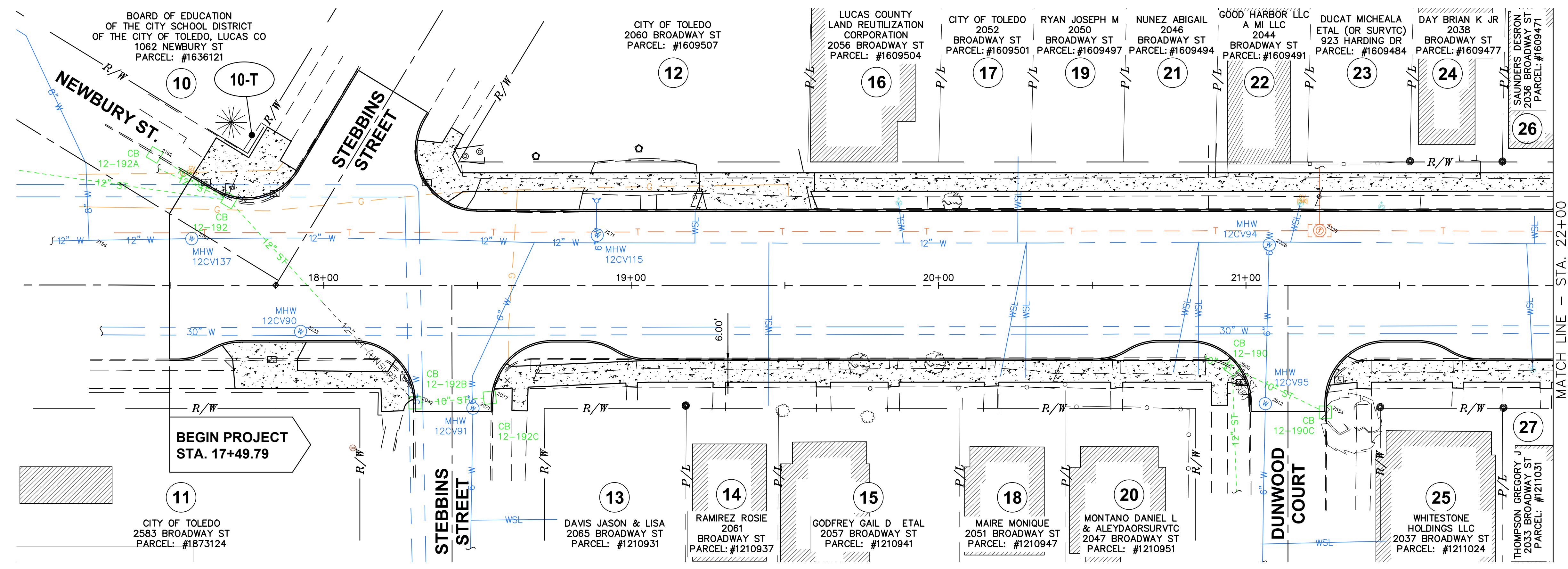
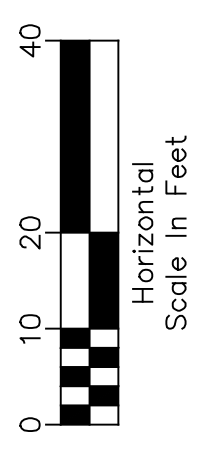
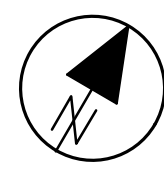
- | | |
|---|---|
| ① ITEM 202 - WALK REMOVED | ⑪ ITEM 407 - NON-TRACKING TACK COAT |
| ② ITEM 202 - CURB REMOVED | ⑫ ITEM 441 - ASPHALT CONCRETE, SURFACE COURSE, TYPE 1 (446), PG64-22 |
| ③ ITEM 202 - PAVEMENT REMOVED | ⑬ ITEM 441 - ASPHALT CONCRETE, INTERMEDIATE COURSE, TYPE 2 (446), PG64-22 |
| ④ ITEM 203 - EXCAVATION | ⑭ ITEM 605 - 6" SHALLOW PIPE UNDERDRAIN, PER 707.31 W/SOCK |
| ⑤ ITEM 204 - SUBGRADE EXCAVATION | ⑮ ITEM 608 - 4" CONCRETE WALK |
| ⑥ ITEM 204 - GRANULAR MATERIAL TYPE C, MODIFIED | ⑯ ITEM 609 - CONCRETE CURB, TYPE A |
| ⑦ ITEM 204 - GEOTEXTILE FABRIC | ⑰ ITEM 653 - 4" TOPSOIL, FURNISHED & PLACED |
| ⑧ ITEM 204 - GEOGRID | ⑱ ITEM 659 - SEEDING & MULCHING, INCLUDING COMMERCIAL FERTILIZER |
| ⑨ ITEM 301 - ASPHALT CONCRETE BASE | |
| ⑩ ITEM 304 - AGGREGATE BASE | |

EXISTING PAVEMENT LEGEND

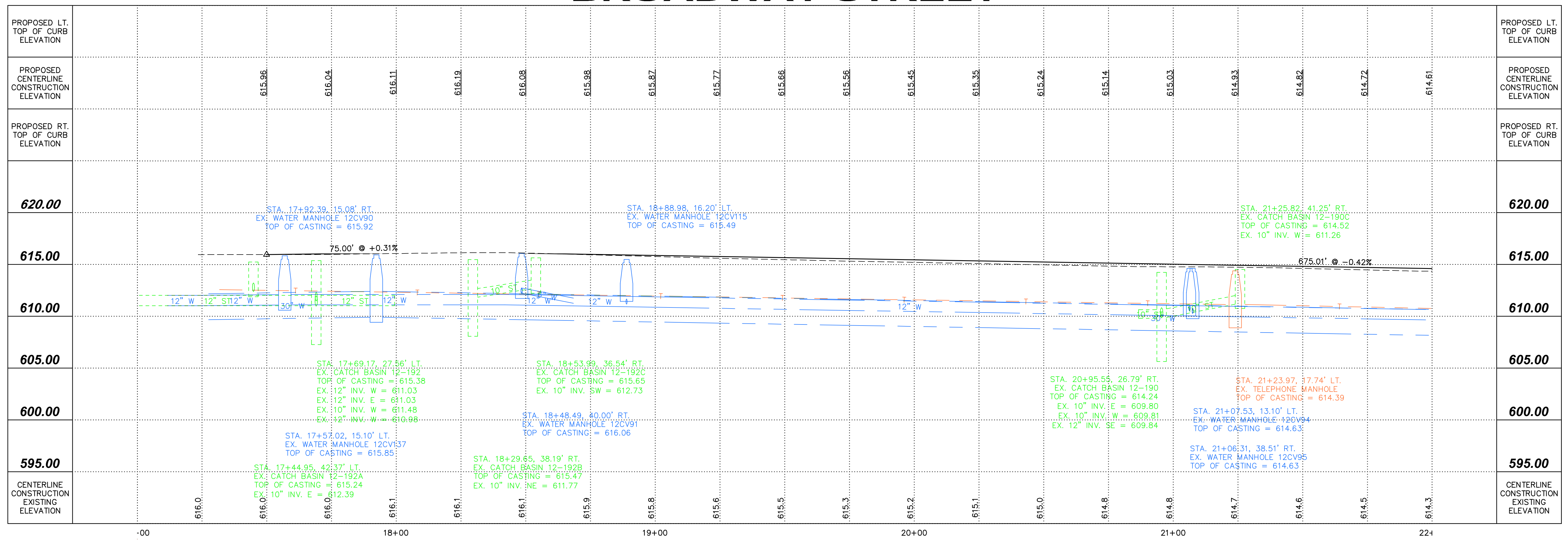
- Ⓐ ASPHALT SURFACE (±5")
CONCRETE BASE (±8")



CONCRETE CURB-TYPE A
(NOT TO SCALE)



BROADWAY STREET



PLAN AND PROFILE
BROADWAY ST. STA. 17+00 TO STA. 22+00

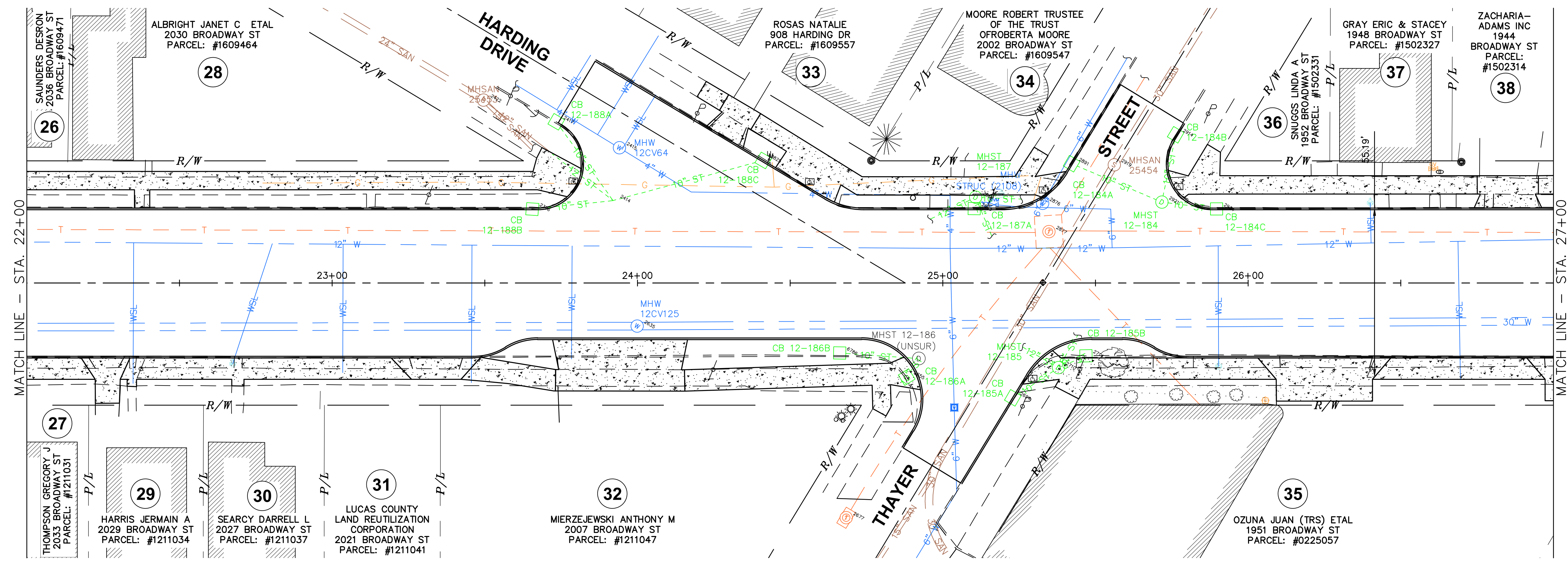
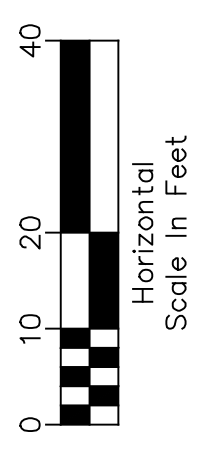
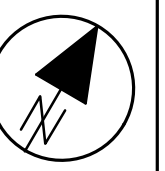
BROADWAY STREET
ROADWAY RECONSTRUCTION
STEBBINS ST. TO WESTERN AVE.

DESIGN AGENCY
Department of Transportation

City of Toledo
Division of Engineering & Construction Mgmt.

DESIGNER -
REVIEWER -
PROJECT ID 21123
SHEET 25 TOTAL 6

X:\21000-21999\21123\DWG\21123-PWP.dwg, 25, 1/27/2023 8:04:25 AM, SchulzLE



MATCH LINE - STA. 22+00

MATCH LINE - STA. 27+00

BROADWAY STREET

PLAN VIEW
BROADWAY ST. STA. 22+00 TO STA. 27+00

BROADWAY STREET
ROADWAY RECONSTRUCTION
STEBBINS ST. TO WESTERN AVE.

DESIGN AGENCY
Department of
Transportation



DESIGNER

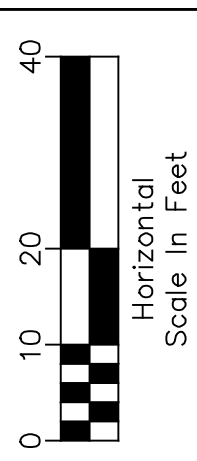
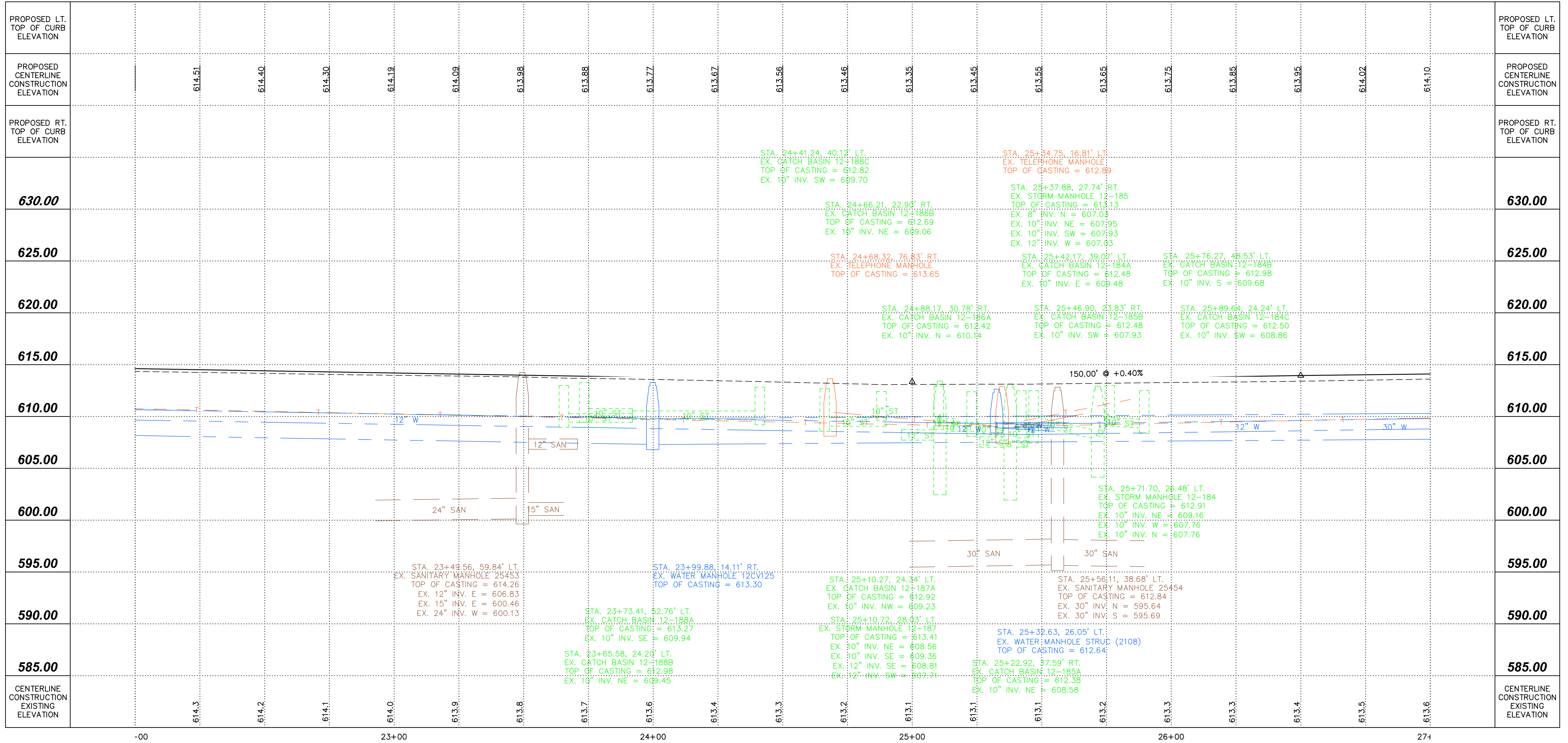
REVIEWER

PROJECT ID
21123

SHEET TOTAL
26A 6

X:\21000-21999\21123\DWG\21123-PWP.dwg, 26A, 1/27/2023 8:05:14 AM, Schuible

BROADWAY STREET

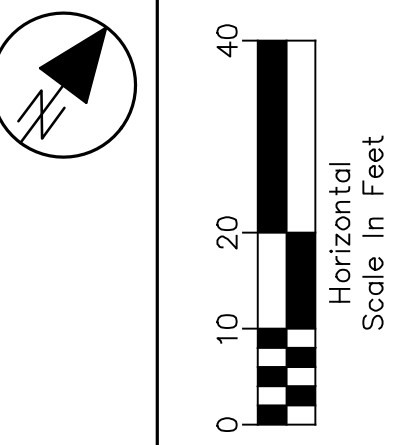
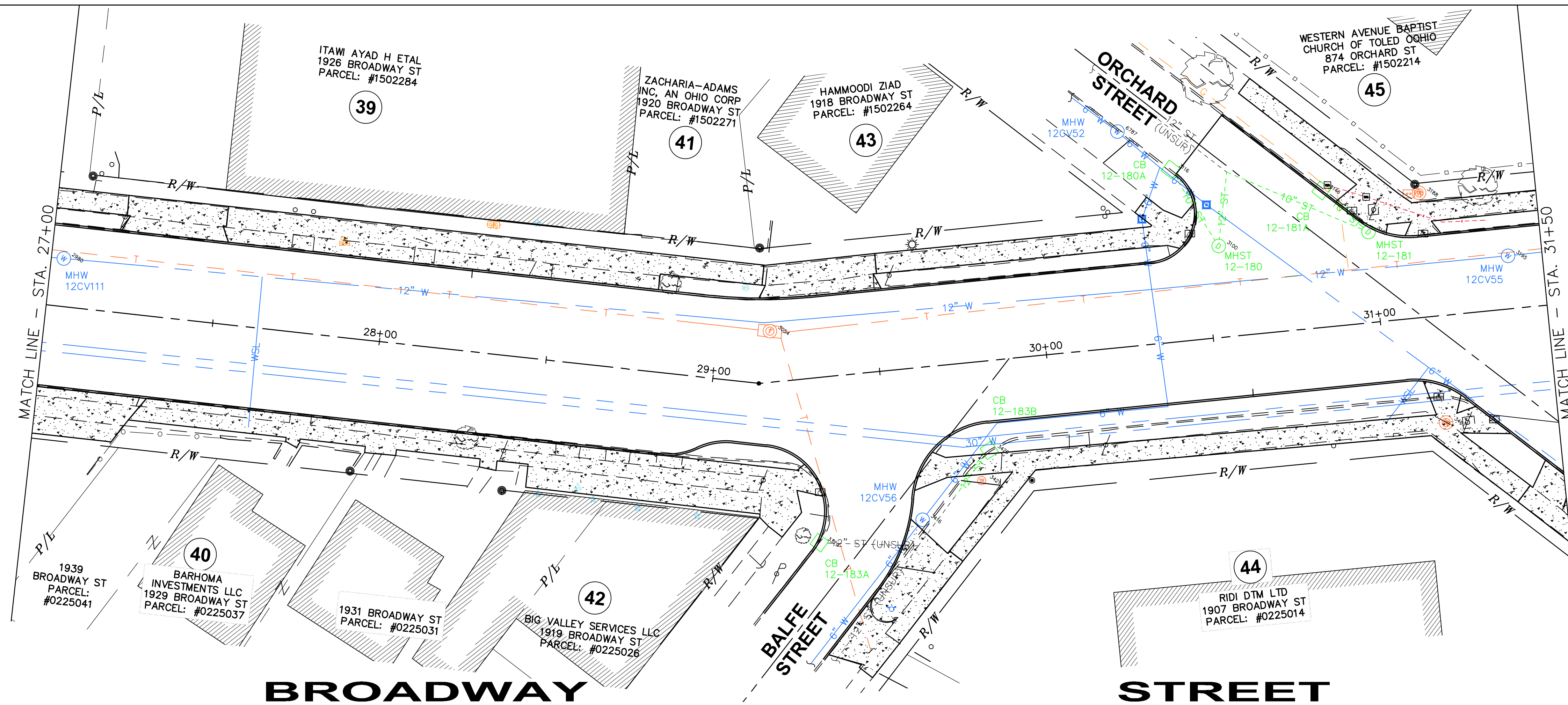


PROFILE VIEW
BROADWAY ST. STA. 22+00 TO STA. 27+00

BROADWAY STREET
ROADWAY RECONSTRUCTION
STEBBINS ST. TO WESTERN AVE.

DESIGN AGENCY Department of Transportation
TOL City of Toledo Division of Engineering & Construction Mgmt.
DESIGNER -
REVIEWER -
PROJECT ID 21123
SHEET TOTAL 26B 6

X:\21000-21999\21123\DWG\21123-PWP.dwg, 26B, 1/27/2023 8:13:54 AM, Schulte



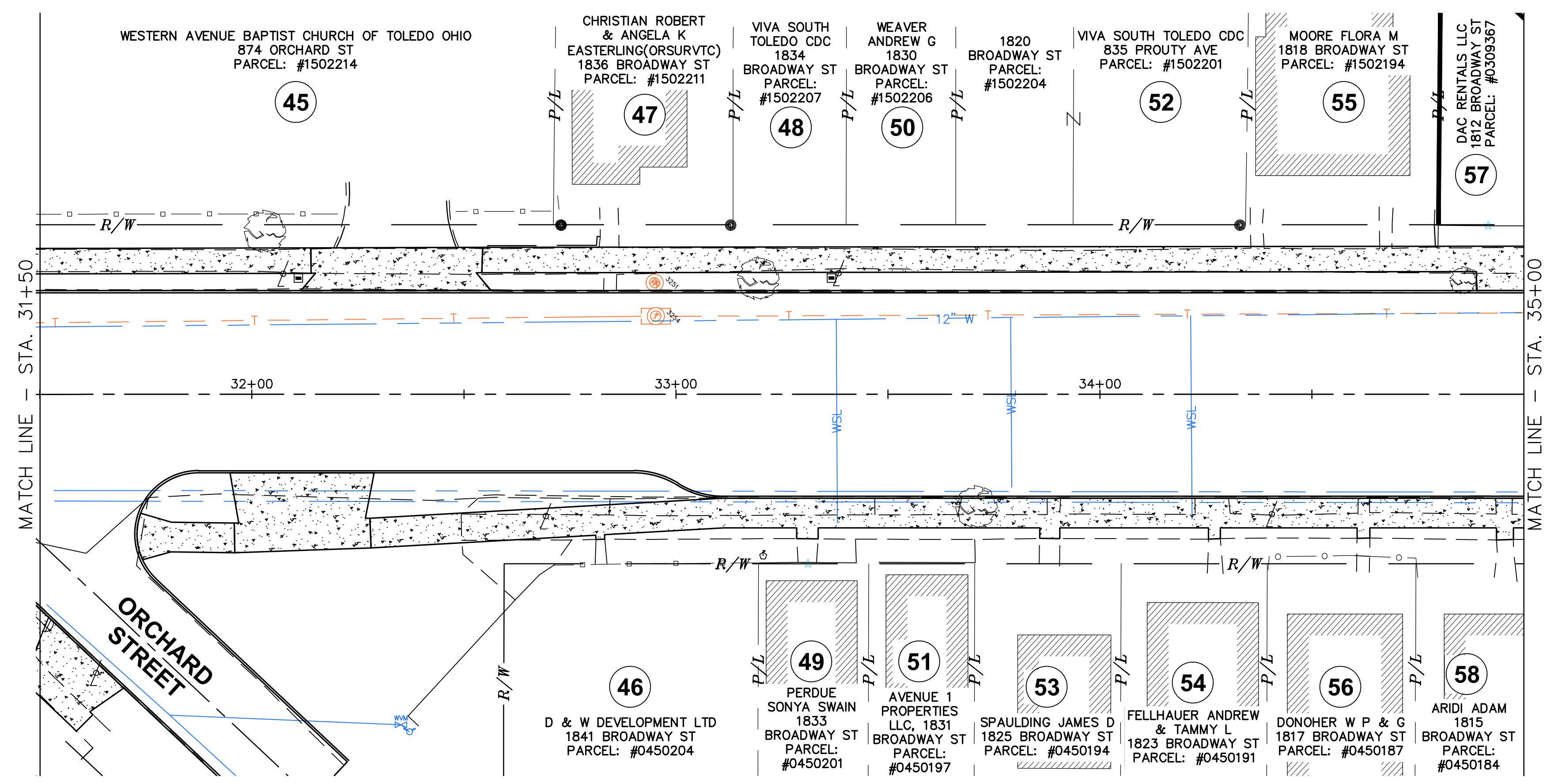
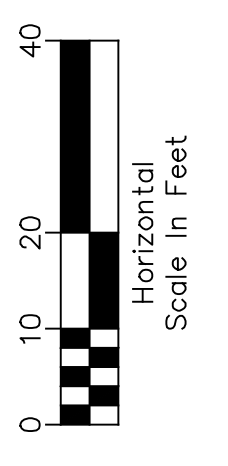
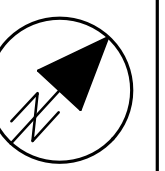
PLAN AND PROFILE
 BROADWAY ST. STA. 27+00 TO STA. 31+50

PROPOSED LT. TOP OF CURB ELEVATION	PROPOSED CENTERLINE CONSTRUCTION ELEVATION	PROPOSED RT. TOP OF CURB ELEVATION	PROPOSED LT. TOP OF CURB ELEVATION																
	614.18																		
	614.25																		
	614.32																		
	614.40																		
	614.48																		
	614.55																		
	614.62																		
	614.70																		
	614.78																		
	614.85																		
	614.92																		
	615.00																		
	615.08																		
	615.15																		
	615.22																		
	615.30																		
	615.38																		
	615.45																		
620.00			620.00																
615.00			615.00																
610.00			610.00																
605.00			605.00																
600.00			600.00																
595.00			595.00																
CENTERLINE CONSTRUCTION EXISTING ELEVATION	613.7	613.8	613.9	614.0	614.1	614.2	614.3	614.4	614.4	614.5	614.6	614.7	614.8	614.9	615.1	615.2	615.2	615.1	
	-00	28+00	29+00	30+00	31+00														

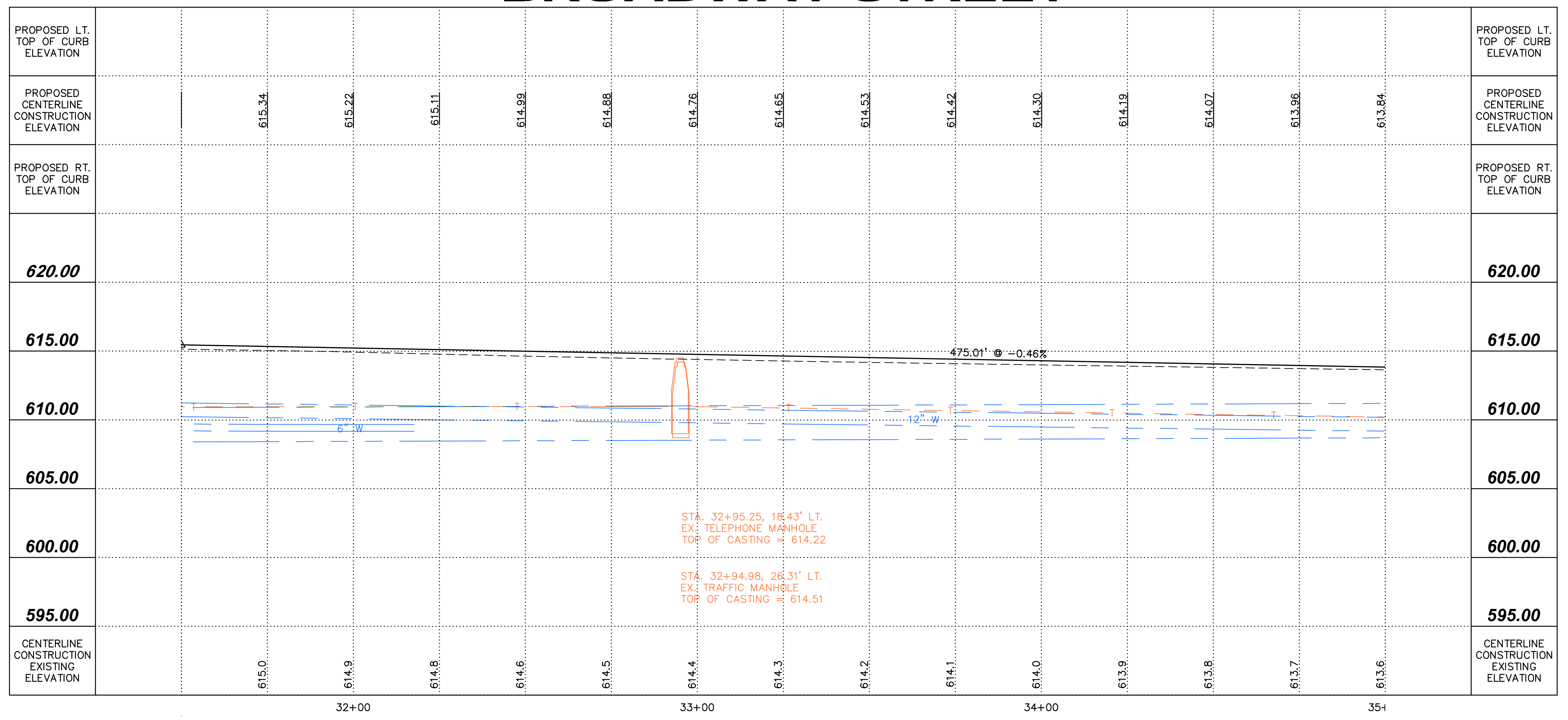
BROADWAY STREET
 ROADWAY RECONSTRUCTION
 STEBBINS ST. TO WESTERN AVE.

DESIGN AGENCY Department of Transportation
TOL City of Toledo Division of Engineering & Construction Mgmt.
DESIGNER -
REVIEWER -
PROJECT ID 21123
SHEET TOTAL 27 6

X:\21000-21999\21123\DWG\21123-PWP.dwg, 27, 1/27/2023 8:18:12 AM, Schultze



BROADWAY STREET

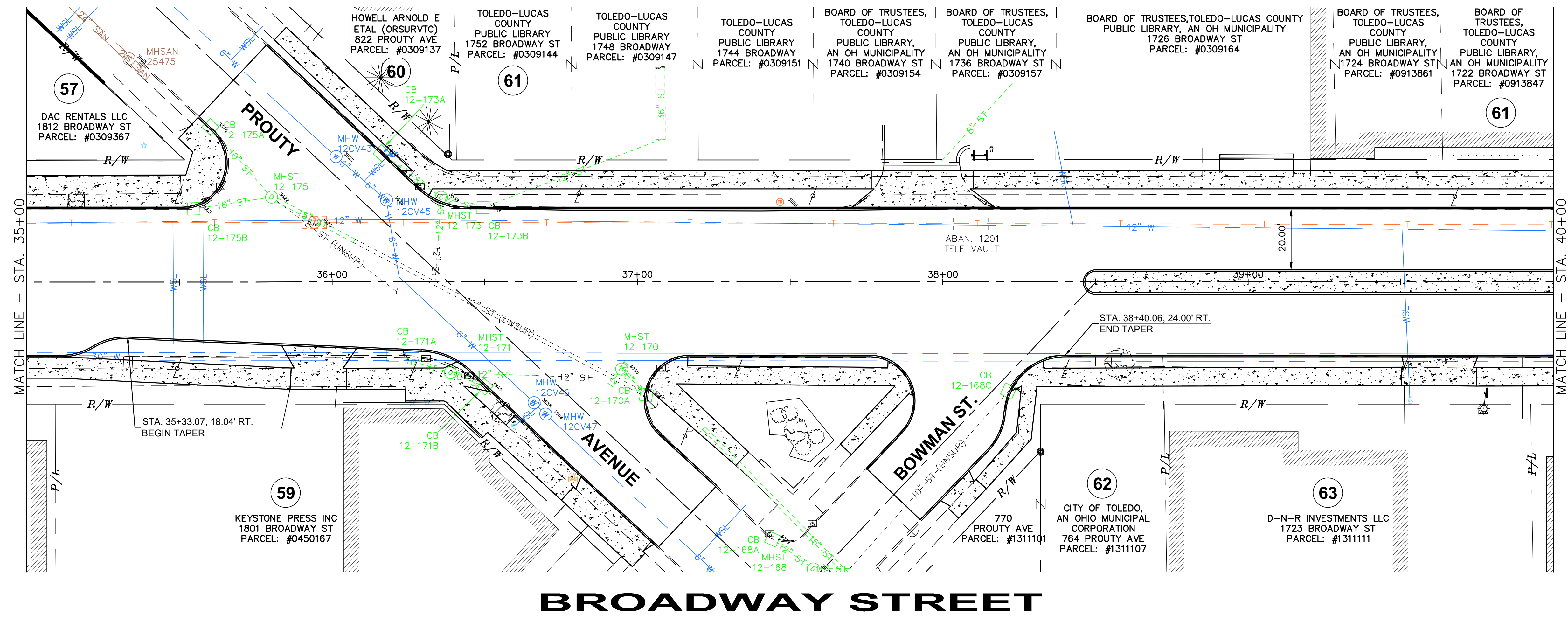
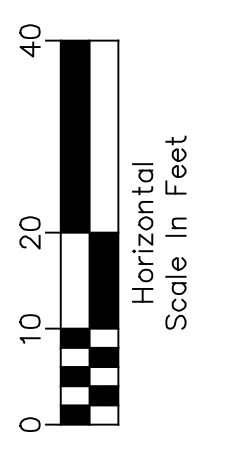
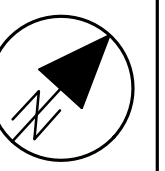


PLAN AND PROFILE
BROADWAY ST. STA. 31+50 TO STA. 35+00

BROADWAY STREET
ROADWAY RECONSTRUCTION
STEBBINS ST. TO WESTERN AVE.

DESIGN AGENCY Department of Transportation
TOL City of Toledo Division of Engineering & Construction Mgmt.
DESIGNER -
REVIEWER -
PROJECT ID 21123
SHEET TOTAL 28 6

X:\21000-21999\21123\DWG\21123-PWP.dwg, 28, 1/27/2023 8:22:49 AM, SchultzE



MATCH LINE - STA. 35+00

MATCH LINE - STA. 40+00

BROADWAY STREET

PLAN VIEW
BROADWAY ST. STA. 35+00 TO STA. 40+00

BROADWAY STREET
ROADWAY RECONSTRUCTION
STEBBINS ST. TO WESTERN AVE.

DESIGN AGENCY
Department of
Transportation



DESIGNER
-

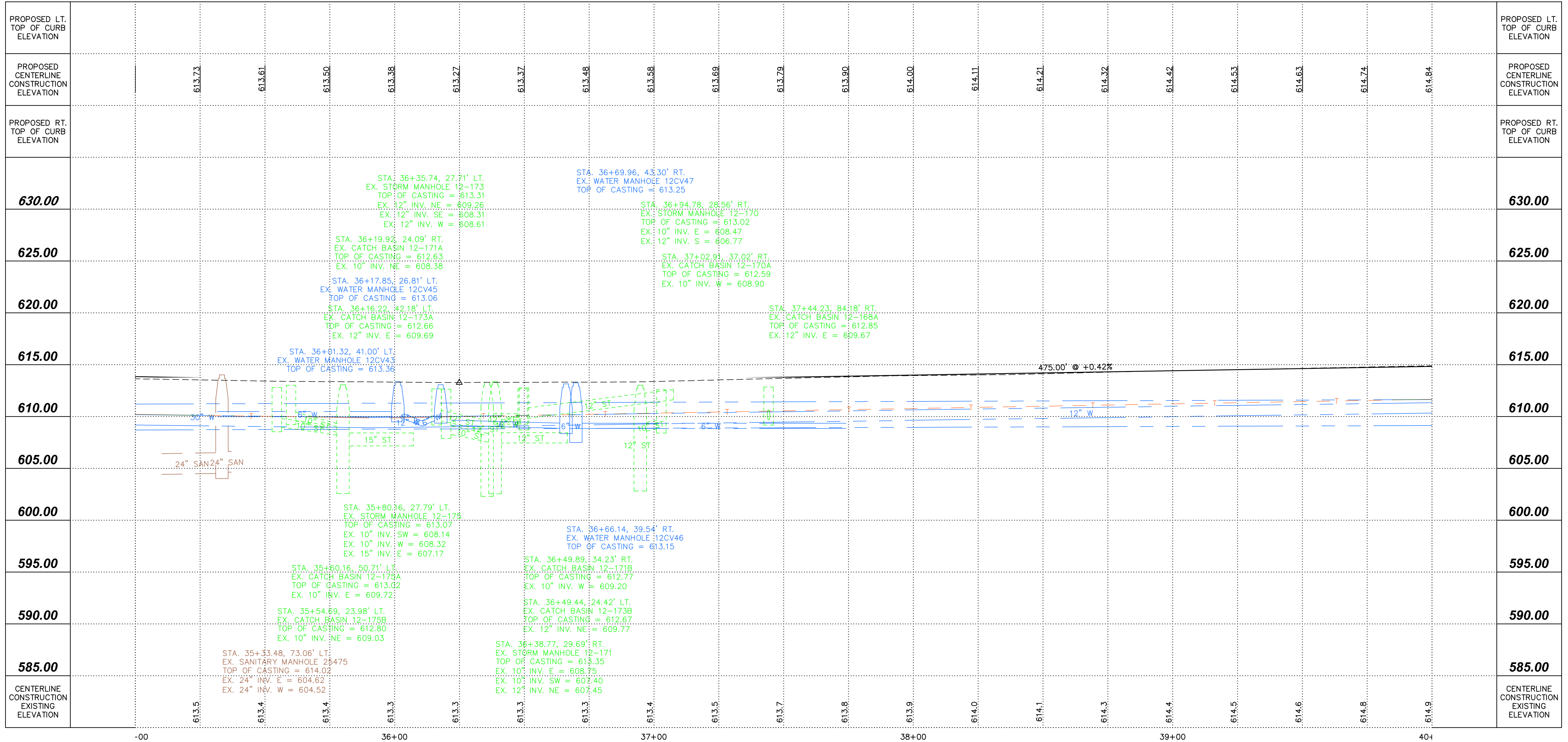
REVIEWER
-

PROJECT ID
21123

SHEET TOTAL
29A | 6

X:\21000-21999\21123\DWG\21123-PWP.dwg, 29A, 1/27/2023 8:27:49 AM, SCHULTE

BROADWAY STREET



PROFILE VIEW
BROADWAY ST. STA. 35+00 TO STA. 40+00

BROADWAY STREET
ROADWAY RECONSTRUCTION
STEBBINS ST. TO WESTERN AVE.

DESIGN AGENCY
 Department of
 Transportation

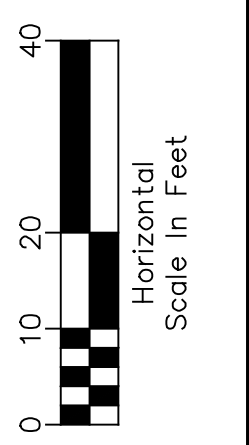


DESIGNER
-

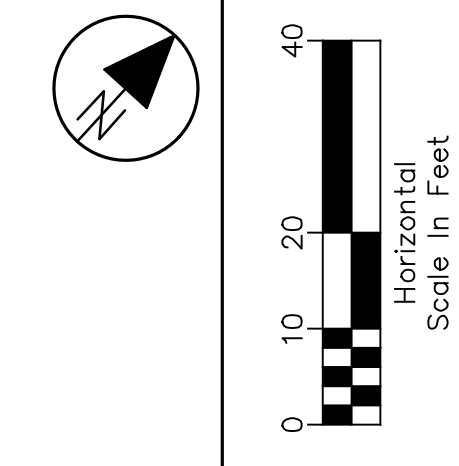
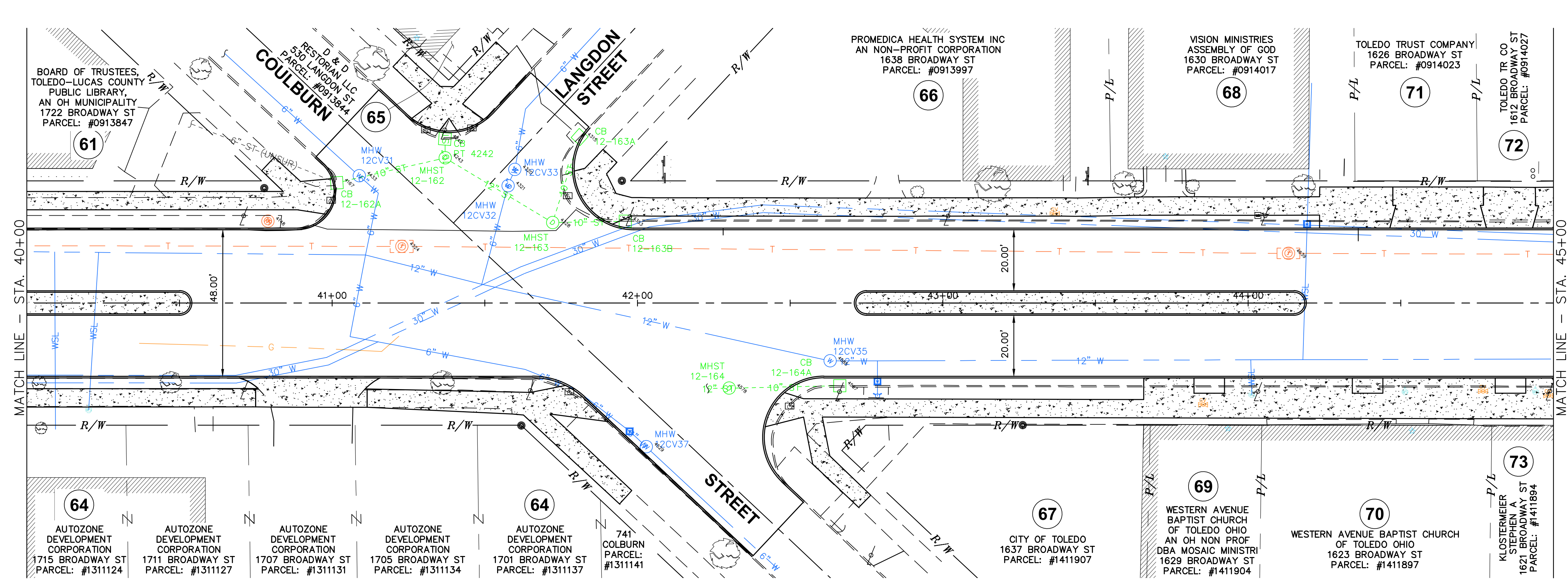
REVIEWER
-

PROJECT ID
21123

SHEET TOTAL
29B | 6



X:\21000-21999\21123\DWG\21123-PWP.dwg, 29B, 1/27/2023 8:33:03 AM, SCHULTE



BROADWAY STREET

PROPOSED LT. TOP OF CURB ELEVATION	PROPOSED CENTERLINE CONSTRUCTION ELEVATION	PROPOSED RT. TOP OF CURB ELEVATION	PROPOSED LT. TOP OF CURB ELEVATION
620.00	614.95	615.05	620.00
615.00	615.16	615.26	615.00
610.00	615.34	615.41	610.00
605.00	615.48	615.56	605.00
600.00	615.64	615.71	600.00
595.00	615.85	615.94	595.00
CENTERLINE CONSTRUCTION EXISTING ELEVATION	616.01	616.08	CENTERLINE CONSTRUCTION EXISTING ELEVATION
	616.16	616.24	
	616.31	616.38	
	616.46		

700.00' @ +0.30%

Stationing: -00, 41+00, 42+00, 43+00, 44+00, 45+

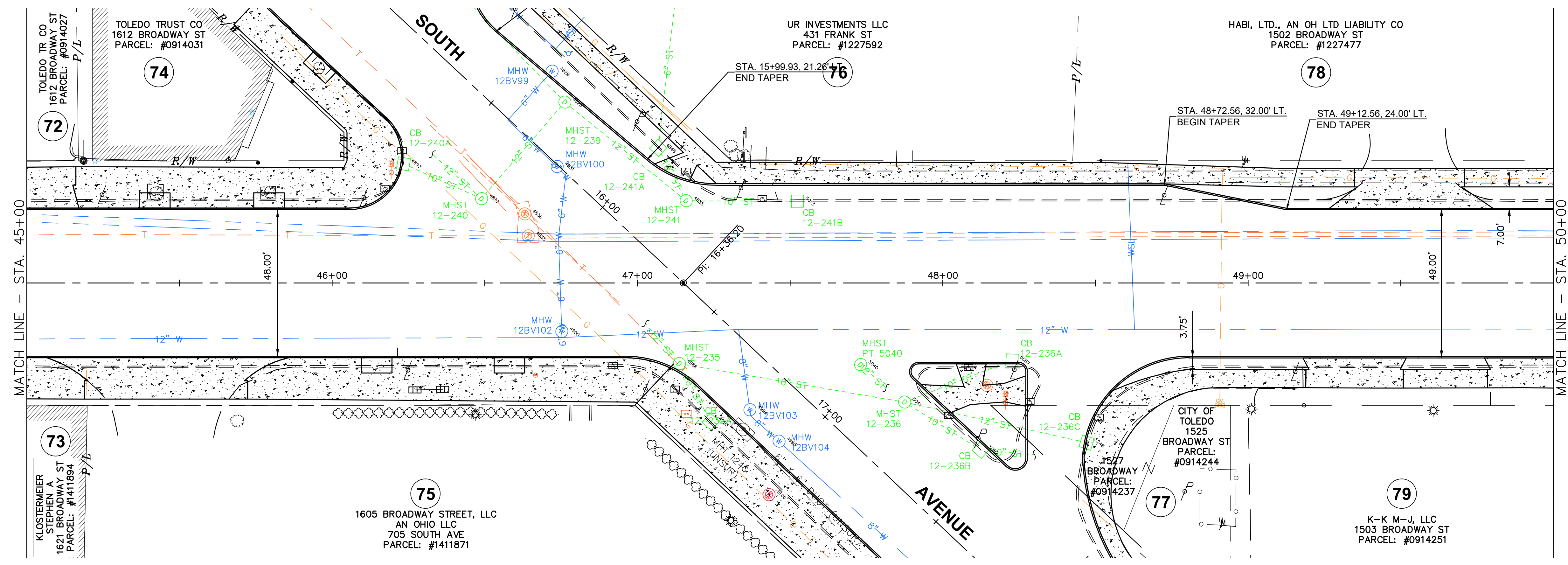
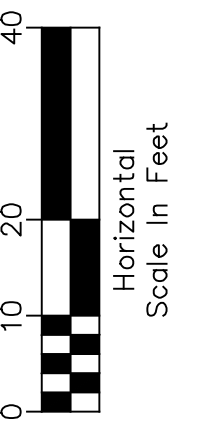
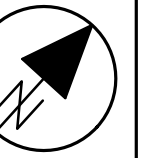
BROADWAY STREET
ROADWAY RECONSTRUCTION
STEBBINS ST. TO WESTERN AVE.

DESIGN AGENCY
 Department of Transportation

TOL
 City of Toledo
 Division of Engineering & Construction Mgmt.

DESIGNER: -
 REVIEWER: -
 PROJECT ID: 21123
 SHEET TOTAL: 30 | 6

X:\21000-21999\21123\DWG\21123-PMP.dwg, 30, 1/27/2023 8:38:07 AM, Schultze



BROADWAY STREET

PLAN VIEW
BROADWAY ST. STA. 45+00 TO STA. 50+00

BROADWAY STREET
ROADWAY RECONSTRUCTION
STEBBINS ST. TO WESTERN AVE.

DESIGN AGENCY
Department of
Transportation



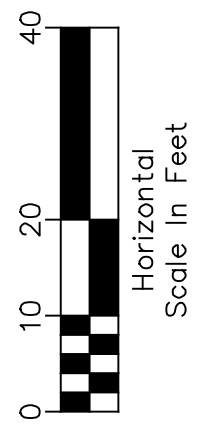
DESIGNER
-

REVIEWER
-

PROJECT ID
21123

SHEET TOTAL
31A | 6

X:\21000-21999\21123\DWG\21123-PWP.dwg, 31A, 1/27/2023 9:42:46 AM, Schuttele



PROFILE VIEW
 BROADWAY ST. STA. 45+00 TO STA. 50+00

BROADWAY STREET
 ROADWAY RECONSTRUCTION
 STEBBINS ST. TO WESTERN AVE.

DESIGN AGENCY
 Department of
 Transportation

TOL
 City of Toledo
 Division of
 Engineering &
 Construction Mgmt.

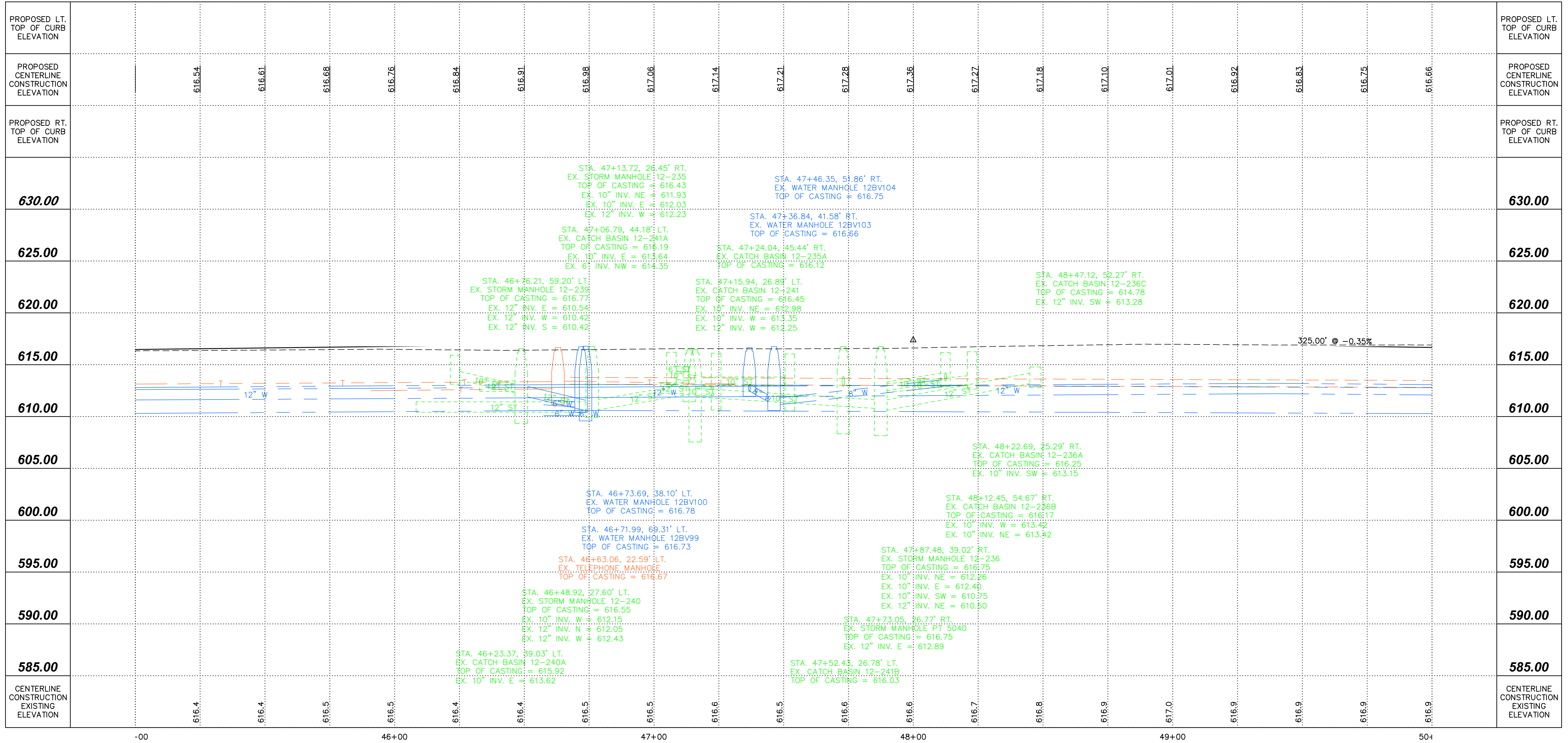
DESIGNER
 -

REVIEWER
 -

PROJECT ID
 21123

SHEET TOTAL
31B | **6**

BROADWAY STREET



-00

46+00

47+00

48+00

49+00

50+00

616.4

616.4

616.5

616.4

616.4

616.5

616.5

616.6

616.6

616.7

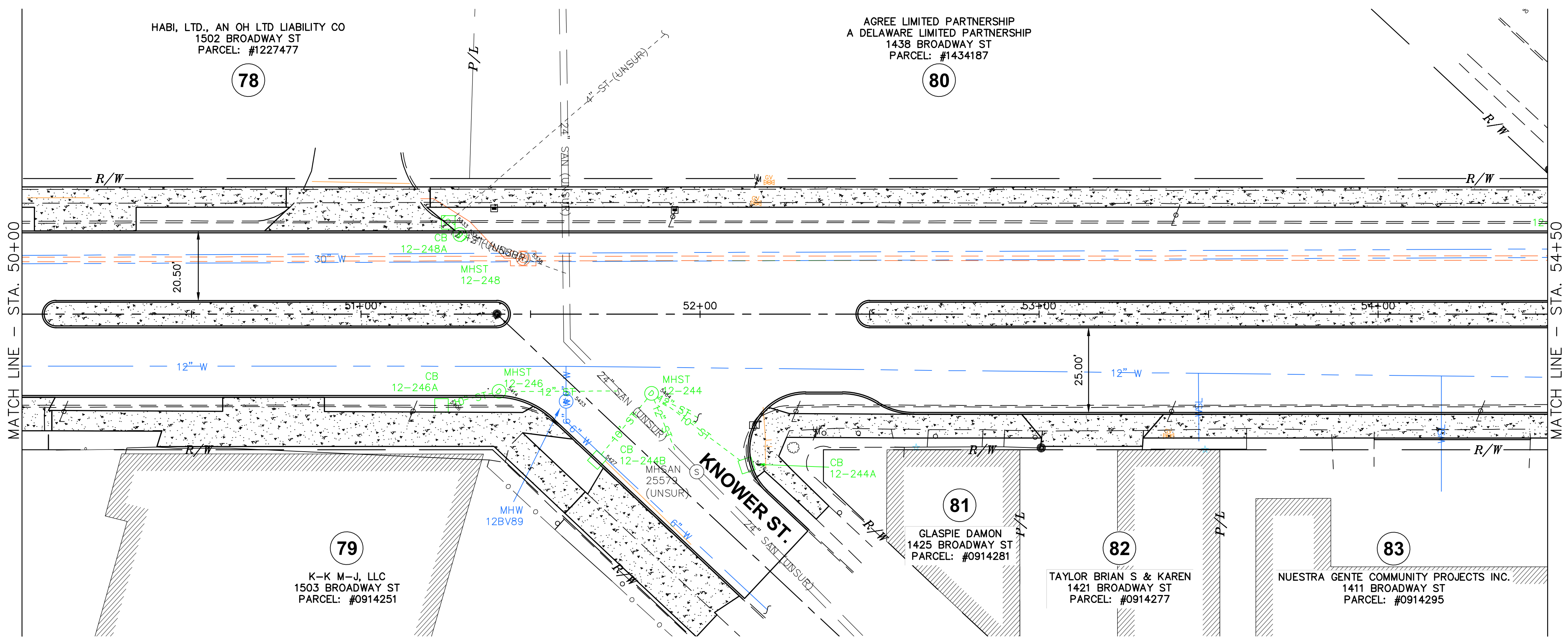
616.8

616.9

616.9

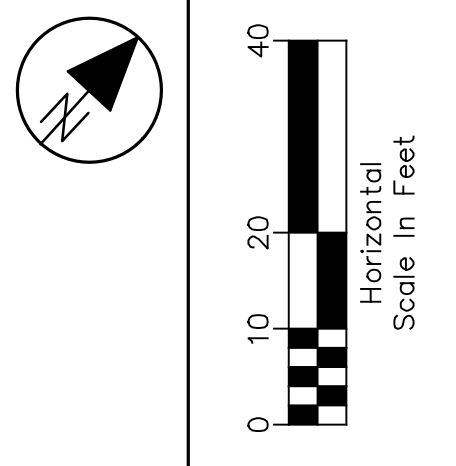
CENTERLINE CONSTRUCTION EXISTING ELEVATION

X:\21000-21999\21123\DWG\21123-PWP.dwg, 31B, 1/27/2023 8:47:41 AM, SCHULTE



BROADWAY STREET

PROPOSED LT. TOP OF CURB ELEVATION																	PROPOSED LT. TOP OF CURB ELEVATION		
PROPOSED CENTERLINE CONSTRUCTION ELEVATION																	PROPOSED CENTERLINE CONSTRUCTION ELEVATION		
PROPOSED RT. TOP OF CURB ELEVATION																	PROPOSED RT. TOP OF CURB ELEVATION		
620.00	STA. 51+40.66, 22.82' RT. EX. STORM MANHOLE 12-246 TOP OF CASTING = 616.27 EX. 10" INV. SW = 612.53 EX. 12" INV. NE = 612.43 STA. 51+69.60, 42.98' RT. EX. CATCH BASIN 12-244B TOP OF CASTING = 615.81 EX. 10" INV. N = 612.73 STA. 51+29.17, 23.47' LT. EX. STORM MANHOLE 12-248 TOP OF CASTING = 616.07 EX. 10" INV. W = 613.12 STA. 51+80.46, 25.74' RT. EX. WATER MANHOLE 12BV89 TOP OF CASTING = 616.18 STA. 51+25.76, 27.05' LT. EX. CATCH BASIN 12-248A TOP OF CASTING = 615.71 EX. 10" INV. E = 612.71 STA. 51+23.74, 26.91' RT. EX. CATCH BASIN 12-246A TOP OF CASTING = 615.90 EX. 10" INV. NE = 613.73 STA. 51+85.66, 23.37' RT. EX. STORM MANHOLE 12-244 TOP OF CASTING = 616.46 EX. 10" INV. E = 611.06 EX. 10" INV. S = 611.81 EX. 12" INV. E = 613.06 EX. 12" INV. SE = 612.44 STA. 52+13.75, 44.59' RT. EX. CATCH BASIN 12-244A TOP OF CASTING = 615.86																620.00		
615.00	225.00' @ +0.35%																615.00		
610.00																	610.00		
605.00																	605.00		
600.00																	600.00		
595.00																	595.00		
CENTERLINE CONSTRUCTION EXISTING ELEVATION	616.9	616.8	616.8	616.8	616.8	616.7	616.7	616.7	616.7	616.6	616.6	616.6	616.5	616.5	616.4	616.4	616.3	616.3	CENTERLINE CONSTRUCTION EXISTING ELEVATION
	-00		51+00			52+00			53+00			54+00							

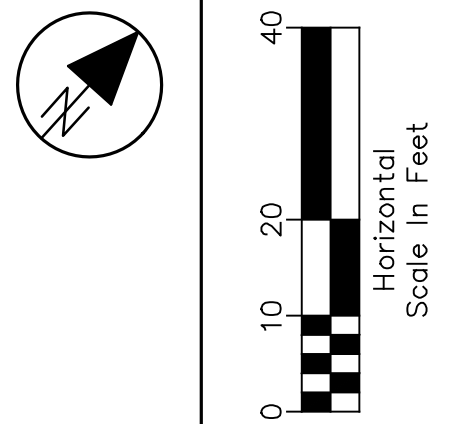
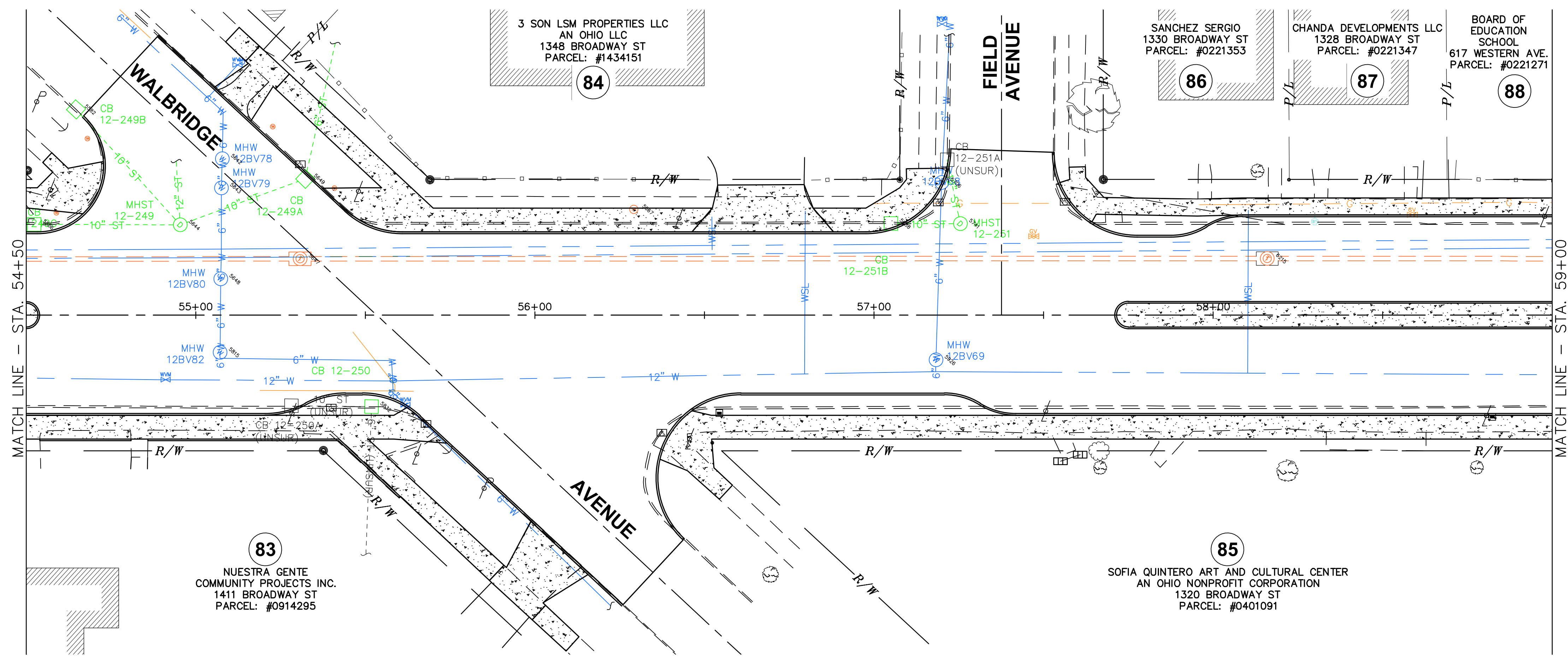


PLAN AND PROFILE
BROADWAY ST. STA. 50+00 TO STA. 54+50

BROADWAY STREET
ROADWAY RECONSTRUCTION
STEBBINS ST. TO WESTERN AVE.

DESIGN AGENCY Department of Transportation	
TOL City of Toledo	
Division of Engineering & Construction Mgmt.	
DESIGNER	-
REVIEWER	-
PROJECT ID	21123
SHEET TOTAL	32 6

X:\21000-21999\21123\DWG\21123-PWP.dwg, 32, 1/27/2023 8:52:17 AM, SchultzE



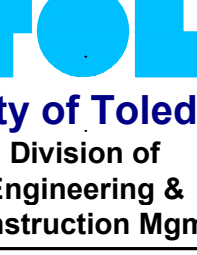
**PLAN AND PROFILE
BROADWAY ST. STA.**

BROADWAY STREET

PROPOSED LT. TOP OF CURB ELEVATION	PROPOSED CENTERLINE CONSTRUCTION ELEVATION	PROPOSED RT. TOP OF CURB ELEVATION	PROPOSED CENTERLINE CONSTRUCTION ELEVATION	PROPOSED RT. TOP OF CURB ELEVATION	PROPOSED CENTERLINE CONSTRUCTION ELEVATION
	616.41		616.29		616.17
			616.05		615.93
			615.81		615.69
			615.67		615.50
			615.42		615.34
			615.27		615.20
			615.12		615.20
			615.07		615.07
			615.35		615.42
					615.42
620.00					620.00
615.00					615.00
610.00					610.00
605.00					605.00
600.00					600.00
595.00					595.00
CENTERLINE CONSTRUCTION EXISTING ELEVATION	616.2	616.2	616.1	616.1	616.0
	616.0	616.0	615.9	615.9	615.9
	615.8	615.8	615.8	615.8	615.7
	615.6	615.6	615.6	615.6	615.5
	615.5	615.5	615.5	615.5	615.4
	615.4	615.4	615.4	615.4	615.4

**BROADWAY STREET
ROADWAY RECONSTRUCTION
STEBBINS ST. TO WESTERN AVE.**

DESIGN AGENCY
Department of Transportation



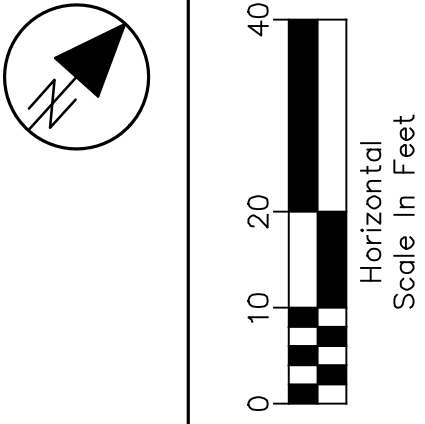
DESIGNER
-

REVIEWER
-

PROJECT ID
21123

SHEET TOTAL
33 | **6**

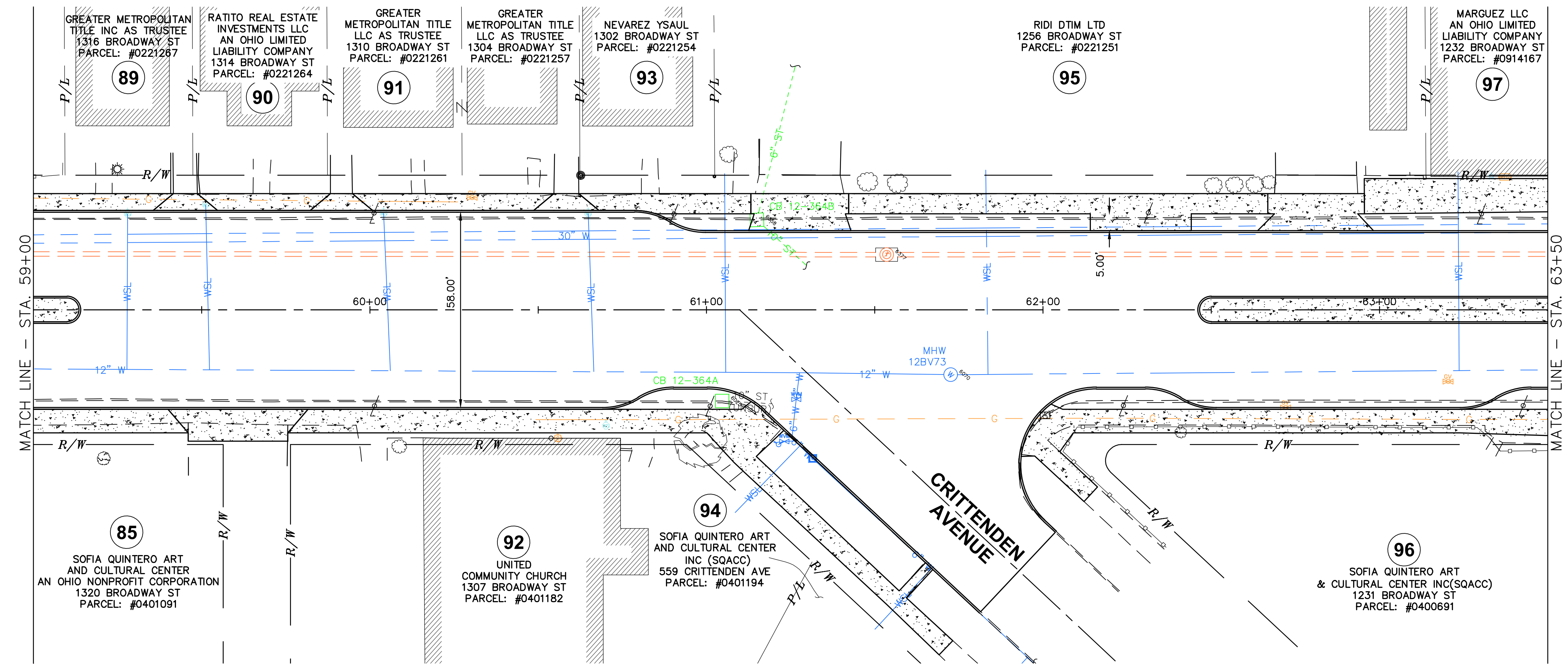
X:\21000-21999\21123\DWG\21123-PWP.dwg, 3, 1/27/2023 8:56:42 AM, SchultzE



PLAN AND PROFILE
BROADWAY ST. STA. 59+00 TO STA. 63+50

BROADWAY STREET
ROADWAY RECONSTRUCTION
STEBBINS ST. TO WESTERN AVE.

DESIGN AGENCY Department of Transportation
TOL City of Toledo
Division of Engineering & Construction Mgmt.
DESIGNER -
REVIEWER -
PROJECT ID 21123
SHEET TOTAL 34 6



BROADWAY STREET

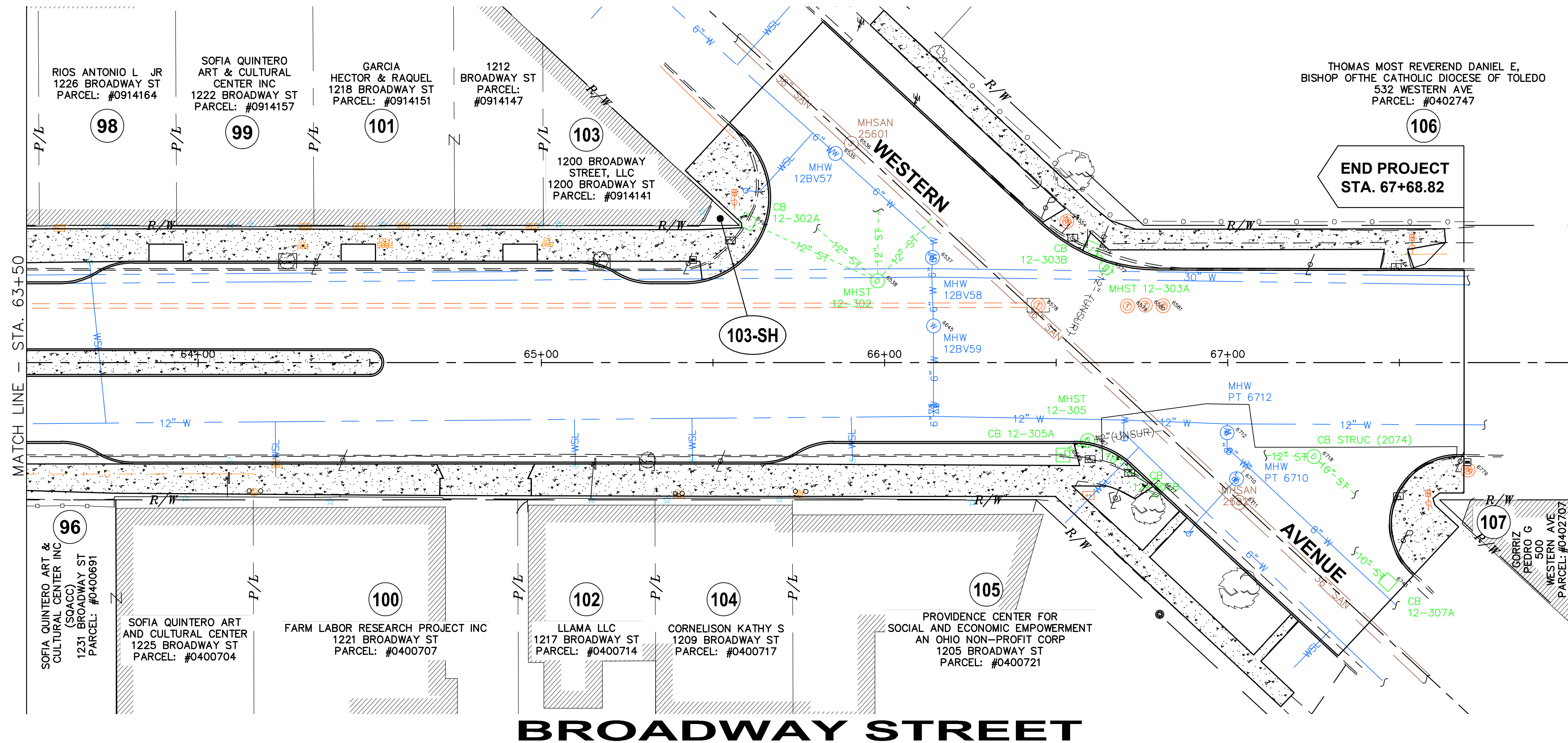
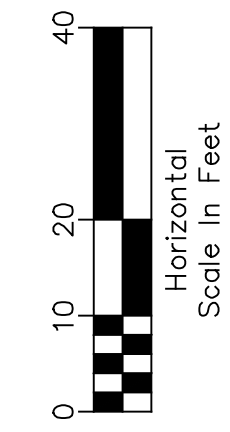
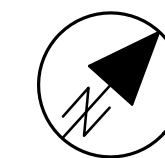
PROPOSED LT. TOP OF CURB ELEVATION	ELEVATION DATA																PROPOSED LT. TOP OF CURB ELEVATION			
PROPOSED CENTERLINE CONSTRUCTION ELEVATION	615.50	615.57	615.65	615.57	615.50	615.42	615.35	615.27	615.20	615.12	615.05	614.97	614.90	614.82	614.75	614.67	614.60	614.52	PROPOSED CENTERLINE CONSTRUCTION ELEVATION	
PROPOSED RT. TOP OF CURB ELEVATION																				PROPOSED RT. TOP OF CURB ELEVATION
620.00																				620.00
615.00																				615.00
610.00																				610.00
605.00																				605.00
600.00																				600.00
595.00																				595.00
CENTERLINE CONSTRUCTION EXISTING ELEVATION	615.4	615.4	615.3	615.3	615.2	615.2	615.1	615.1	615.1	615.0	615.0	614.9	614.9	614.9	614.8	614.8	614.7	614.6	CENTERLINE CONSTRUCTION EXISTING ELEVATION	
	-00		60+00		61+00		62+00		63+00		63+50									

STA. 61+14.99, 26.71' LT.
 EX. CATCH BASIN 12-364B
 TOP OF CASTING = 614.23
 EX. 6" INV. NW = 612.03
 EX. 10" INV. E = 610.23
 STA. 61+04.68, 27.07' RT.
 EX. CATCH BASIN 12-364A
 TOP OF CASTING = 614.22

STA. 61+72.54, 19.25' RT.
 EX. WATER MANHOLE 12BV73
 TOP OF CASTING = 614.69

STA. 61+53.53, 16.41' LT.
 EX. TELEPHONE MANHOLE
 TOP OF CASTING = 614.68

X:\21000-21999\21123\DWG\21123-PNP.dwg, 34, 1/27/2023 9:01:27 AM, Schultze



PLAN VIEW
 BROADWAY ST. STA. 63+50 TO STA. 68+00

BROADWAY STREET
 ROADWAY RECONSTRUCTION
 STEBBINS ST. TO WESTERN AVE.

DESIGN AGENCY
 Department of
 Transportation



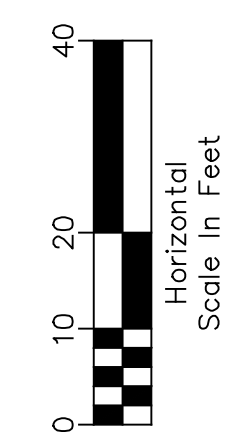
DESIGNER
 -

REVIEWER
 -

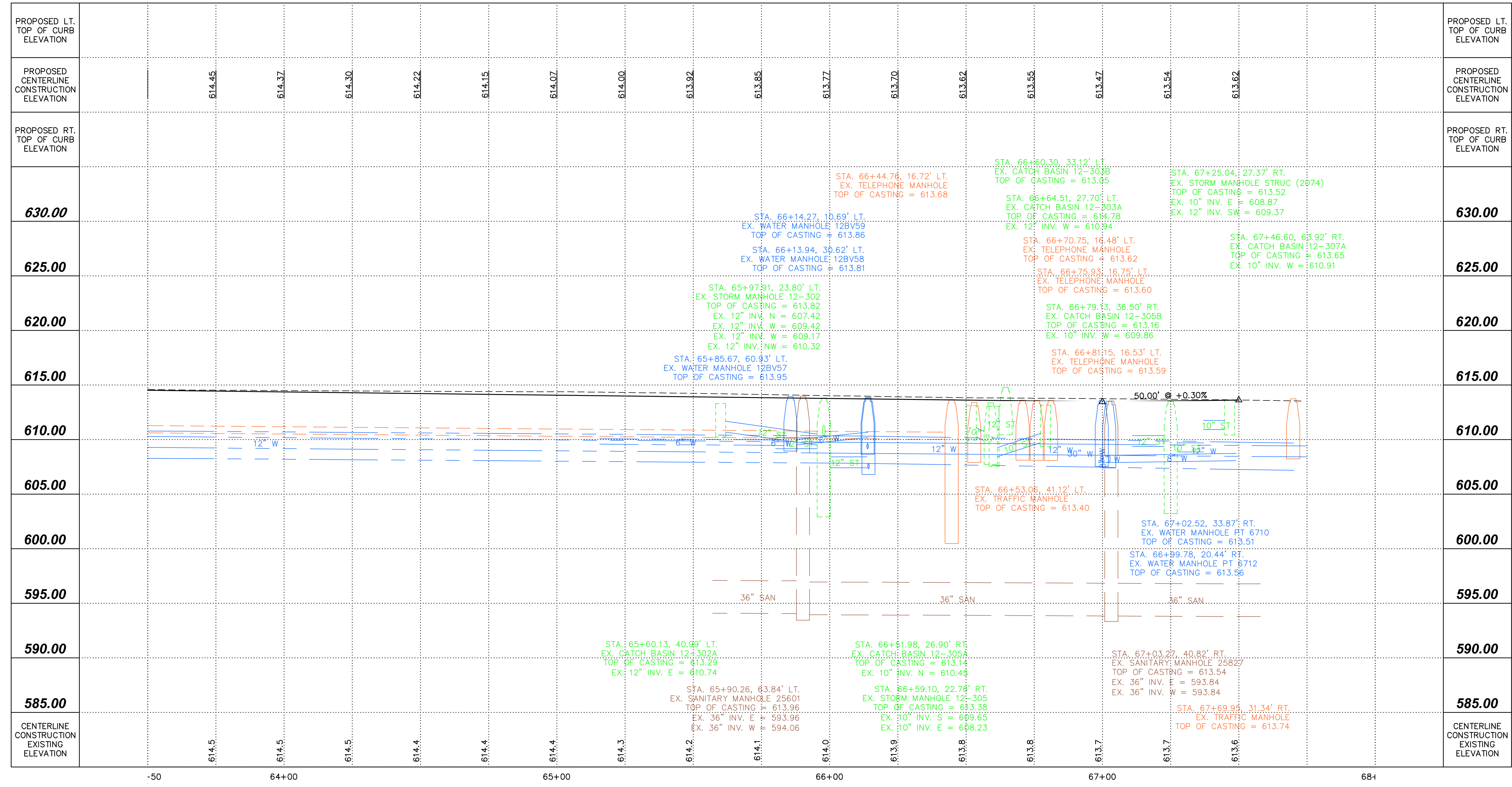
PROJECT ID
 21123

SHEET TOTAL
 35A | 6

X:\21000-21999\21123\DWG\21123-PWP.dwg, 35A, 1/27/2023 9:06:31 AM, SCHULTE



BROADWAY STREET



PROFILE VIEW
BROADWAY ST. STA. 63+50 TO STA. 68+00

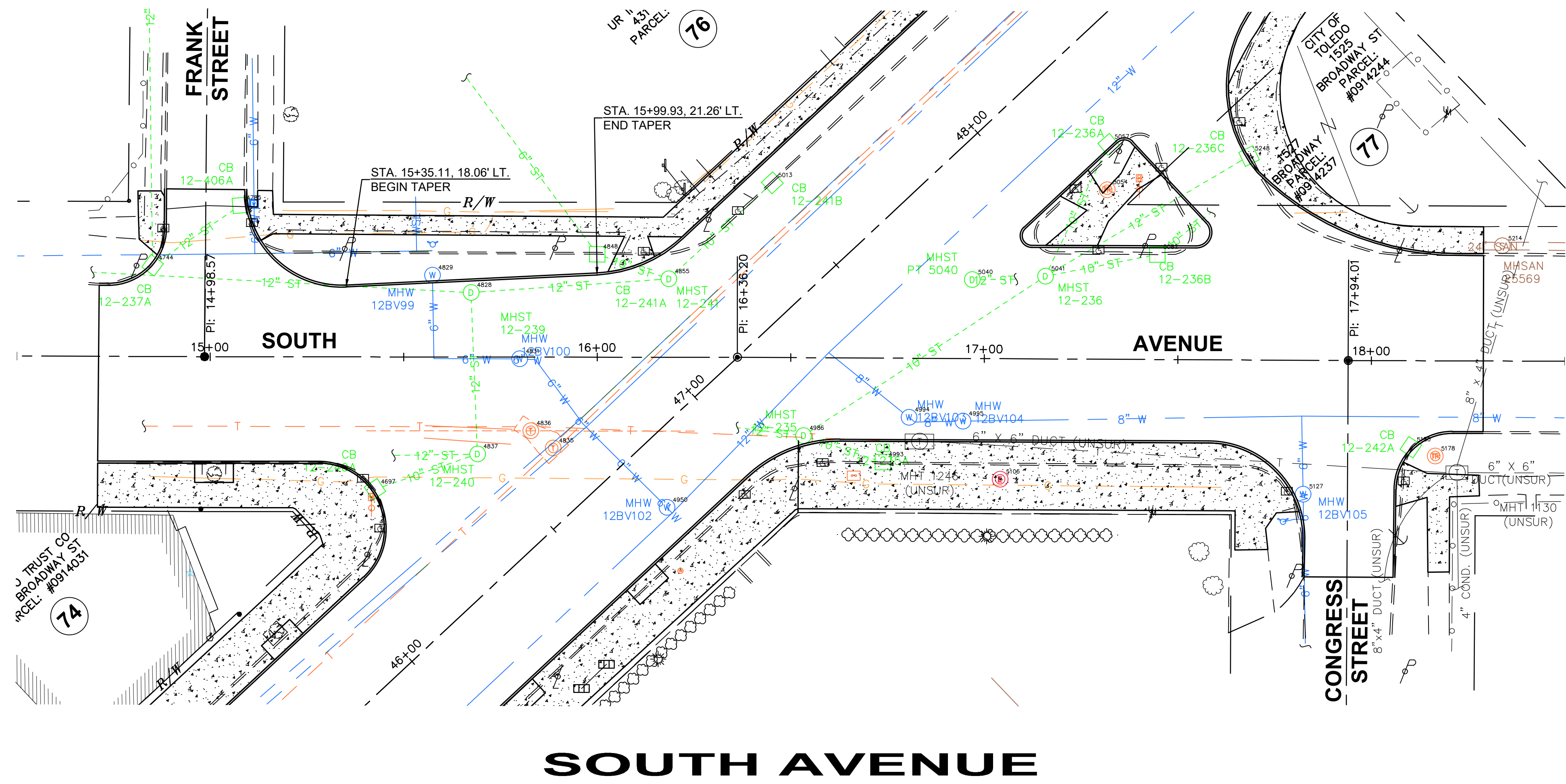
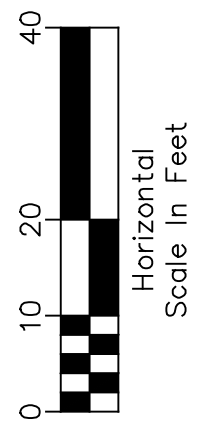
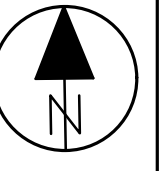
BROADWAY STREET
ROADWAY RECONSTRUCTION
STEBBINS ST. TO WESTERN AVE.

DESIGN AGENCY
 Department of Transportation

 City of Toledo
 Division of Engineering & Construction Mgmt.

DESIGNER
 -
 REVIEWER
 -
 PROJECT ID
 21123
 SHEET TOTAL
35B | **6**

X:\21000-21999\21123\DWG\21123-PWP.dwg, 35B, 1/27/2023 9:12:27 AM, Schulte



SOUTH AVENUE

PLAN VIEW
SOUTH AVE. STA. 14+50 TO STA. 18+50

BROADWAY STREET
ROADWAY RECONSTRUCTION
STEBBINS ST. TO WESTERN AVE.

DESIGN AGENCY
 Department of
 Transportation



DESIGNER
 -

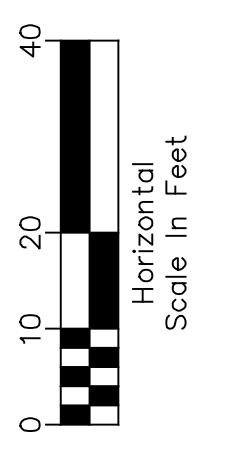
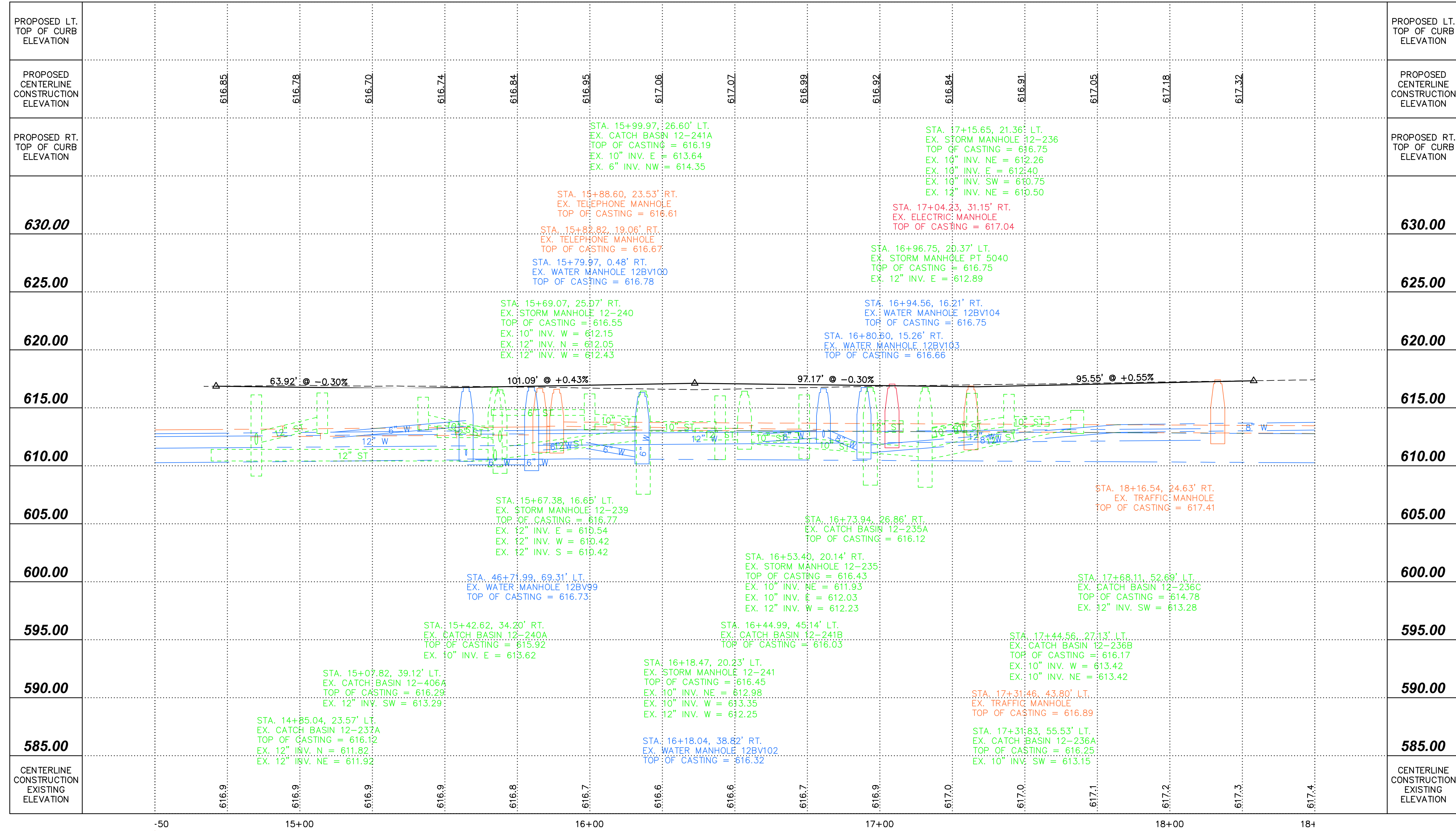
REVIEWER
 -

PROJECT ID
 21123

SHEET TOTAL
36A | **6**

X:\21000-21999\21123\DWG\21123-PWP.dwg, 36A, 1/27/2023 9:17:21 AM, SCHULTE

SOUTH AVENUE



PROFILE VIEW
SOUTH AVE. STA. 14+50 TO STA. 18+50

BROADWAY STREET
ROADWAY RECONSTRUCTION
STEBBINS ST. TO WESTERN AVE.

DESIGN AGENCY
 Department of
 Transportation



DESIGNER
 -

REVIEWER
 -

PROJECT ID
 21123

SHEET TOTAL
36B | **6**

X:\21000-21999\21123\DWG\21123-PWP.dwg, 36B, 1/27/2023 9:22:11 AM, SCHULTE